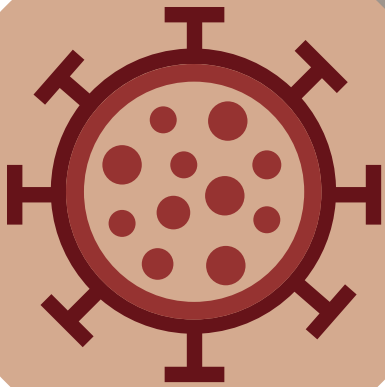


2022 ALASKA HIGHER EDUCATION ALMANAC

The State of Higher Education in Alaska



COVID-19 2ND EDITION



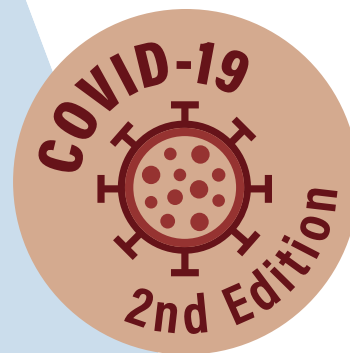
Alaska
Commission on
Postsecondary
Education

Alaska Student
Loan Corporation

Alaska Commission on Postsecondary Education
PO Box 110505, Juneau, Alaska 99811-0505
800-441-2962 | in Juneau 907-465-2962
TTY: Dial 711 or 800-770-8973

ALASKA HIGHER EDUCATION ALMANAC

The State of Higher Education in Alaska



CONTRIBUTORS

K. Keller
R. Millay
K. Thomas
S. Efird
K. Hillenbrand
D. Erickson
M. O'Dell
S. Hann

ALASKA COMMISSION ON POSTSECONDARY EDUCATION

PO Box 110505, Juneau, Alaska 99811-0505
800-441-2962 | In Juneau: 907-465-2962
TTY: Dial 711 or 800-770-8973

Institutional profile information in this report (page 34) includes IPEDS data for reporting institutions, survey responses for non-Alaska based institutions and Alaska workforce training centers. ACPE can answer questions about the data for the Alaska Student Loan, APS, and AEG data, and can provide contact information for questions about campus information used in this publication.



IMPORTANT ANNOUNCEMENT:

ALMANAC 2023: SPRING RELEASE

THE ALMANAC TIMELINE WILL BE SHIFTING FROM A WINTER TO SPRING RELEASE.

In 2017, ACPE published the inaugural Alaska Higher Education Almanac. Now in its 5th year of production, the Almanac continues to offer valuable information about Alaska's postsecondary institutions, financial aid programs, educational attainment, and workforce needs, providing a comprehensive picture of postsecondary education in Alaska. Additionally, the Almanac began an effort in 2020 to measure the impacts of the coronavirus (COVID-19) pandemic on Alaska's higher education systems.

By scheduling our publication date to be better aligned with pertinent data releases, we believe we will be able to provide timelier insights into the state of higher education in Alaska. It should be noted that this transitional 2022 edition will include two years worth of data where appropriate to prevent gaps in data reporting.

TABLE OF CONTENTS

SECTION #1

ACPE & THE COMMISSION

- 4 The Commission & ACPE's Mission
- 5 Letter from Commission Leadership
- 6 ACPE Commission Members
- 6 Alaska Postsecondary Access & Completion Network

- 8 COVID-19 2020-21: Disruptions to Alaska's Postsecondary Pipeline & Impacts on Student Success (EXHIBIT 1 - 9)

SECTION #2

HIGHER EDUCATION: ALASKA CONTEXT

- 12 College Preparation During High School (EXHIBIT 10 - 11)
- 13 Standardized Testing (EXHIBIT 12 - 13)
- 13 High School Graduation Rates (EXHIBIT 14)
- 14 College Enrollments of High School Graduates (EXHIBIT 15 - 17)
- 15 Distance Education: WUE & NC-SARA Highlights (EXHIBIT 18 - 21)
- 16 Alaska Postsecondary Enrollment Trends (EXHIBIT 22 - 26)

- 16 COVID: First-time Freshman Postsecondary Enrollments (EXHIBIT 25)

- 18 Completions (EXHIBIT 27 - 28)

- 19 Credentials (EXHIBIT 29 - 32)

- 20 Education Attainment (EXHIBIT 33)

- 21 Economic Impact (EXHIBIT 34 - 35)

- 21 COVID: Economic Recovery (EXHIBIT 36)

SECTION #3

HIGHER EDUCATION: NATIONAL CONTEXT

- 22 High School Graduate Enrollment Breakdown (EXHIBIT 37 - 39)

- 23 National Context Table A (EXHIBIT 40)

- 24 Education Attainment Rates (EXHIBIT 41)

- 24 Postsecondary Graduation Rates (EXHIBIT 42 - 43)

- 25 National Context Table B (EXHIBIT 44)

- 26 Alaska vs. National Metrics (Other) (EXHIBIT 45 - 54)

SECTION #4

FINANCIAL AID & STUDENT OUTCOMES

- 29 Federal & State Programs Disbursement Summary (EXHIBIT 55)

- 29 COVID: CARES Act Funds (EXHIBIT 56)

- 30 Alaska Performance Scholarship (APS) Highlights (EXHIBIT 57 - 62)

- 31 COVID: APS-Eligible Students (EXHIBIT 60)

- 32 Alaska Education Grant (AEG) Highlights (EXHIBIT 63 - 65)

SECTION #5

ALASKA POSTSECONDARY INSTITUTIONS

- 34 School Profiles & Workforce Training Centers (EXHIBIT 66-68)

- 40 COVID: Postsecondary institution pandemic response (EXHIBIT 67)

SECTION #6

DATA NOTES

ACPE & THE COMMISSION

THE COMMISSION

The Alaska Commission on Postsecondary Education (ACPE) was created by the Alaska Legislature in 1974 to centralize planning for higher education and administer financial aid programs.

In 1987, the Legislature established the **Alaska Student Loan Corporation**, which funds the Commission's programs and services.

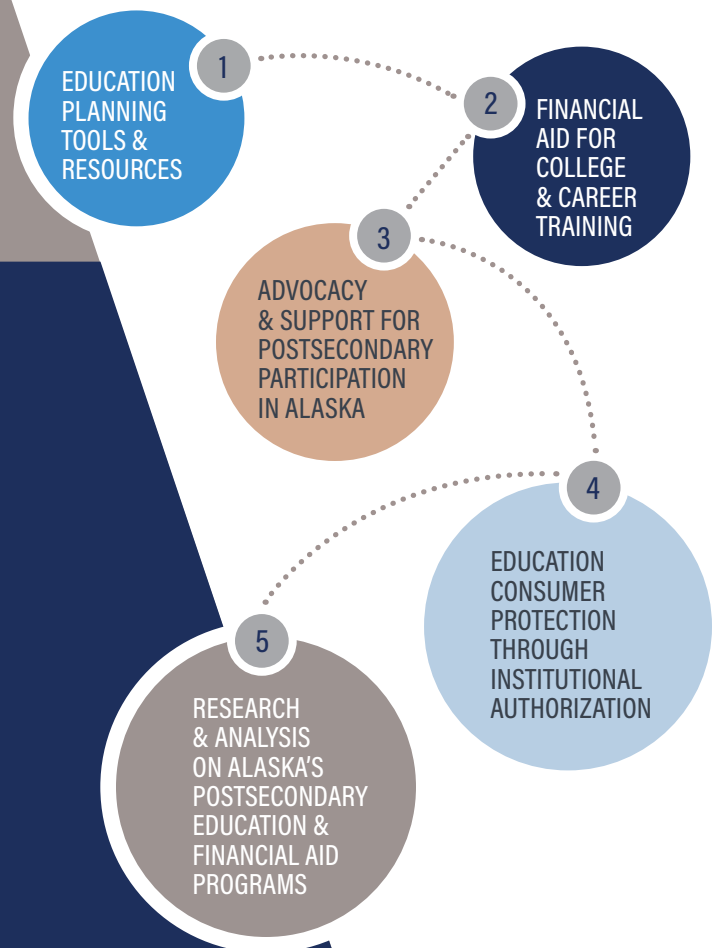
The following responsibilities and authorities, set out in law, frame the Commission's overarching mission of improving access to and success in college and career training for Alaskans.

- 1 SUPPORTS THE GROWTH & DEVELOPMENT OF POSTSECONDARY PROGRAMS
- 2 ASSESSES EDUCATIONAL OUTCOMES
- 3 ADMINISTERS FINANCIAL AID PROGRAMS & INTERSTATE EDUCATION COMPACT PROGRAMS
- 4 ADVISES ON CONSORTIA & COOPERATIVE AGREEMENTS AMONG ALASKA POSTSECONDARY INSTITUTIONS
- 5 REGULATES & ENSURES COMPLIANCE OF POSTSECONDARY INSTITUTIONS AS THE STATE AGENCY REQUIRED BY FEDERAL HIGHER EDUCATION LAW

ACPE'S MISSION



The Alaska Commission on Postsecondary Education (ACPE) **promotes access to and success in postsecondary education and career training after high school.** Funded by the Alaska Student Loan Corporation, the Commission provides:





LETTER FROM COMMISSION LEADERSHIP

ACPE: POSITIVELY IMPACTING ALASKA'S HIGHER EDUCATION OUTCOMES.

As Alaska continues to evolve and adapt to economic, environmental, and COVID-19 related challenges, so too does the landscape of higher education in Alaska. Throughout 2021, Alaska continued to address the ongoing, far-reaching impacts of the COVID-19 pandemic. The higher education community throughout Alaska proved to be responsive, prudent, and innovative with its efforts to develop, continue, and redefine access to and completion of postsecondary education for all Alaskans.

While the statistics and data in the 2021 Higher Education Almanac reflect that there is much work to be done to improve enrollment and completion rates in Alaska, it is also important to recognize the depth and breadth of the efforts underway to make impactful, sustainable change.

One of the lessons learned from the ongoing COVID-19 pandemic is that change takes

a community. The Alaska Commission on Postsecondary Education made this a central theme for 2021. ACPE recognizes that our mission to promote access to and success in education and career training beyond high school cannot be reached without critical partnerships with education stakeholders throughout Alaska.

As such, ACPE sought feedback throughout 2021 for strategic initiatives that we believe will support higher education in Alaska:

STRATEGIC PLANNING: ACPE MISSION, VISION, & VALUES

- FEEDBACK SESSIONS

ALASKA PERFORMANCE SCHOLARSHIP

- MCDOWELL REPORT
- LISTENING SESSIONS
- CHANGE RECOMMENDATIONS

ALASKA FAFSA COMPLETION INITIATIVE

INSTITUTIONAL AUTHORIZATION REGULATION CHANGE PROJECT

AKCIS UPDATES ALASKA-BASED OPPORTUNITIES:

- EDUCATION
- SCHOLARSHIPS
- EMPLOYMENT

RESPONSIVE DELIVERY OF ACPE FINANCIAL AID PROGRAMS & EDUCATIONAL RESOURCES

CONVERSATIONS ON ADDRESSING WORKFORCE DEVELOPMENT NEEDS

ACPE remains hopeful that through partnerships and intentional collaboration, progress can be made to secure sustainable funding for state financial aid programs like the Alaska Performance Scholarship (APS), Alaska Education Grant (AEG), and WWAMI through the Higher Education Investment Fund. These efforts will ensure Alaskans can rely on these impactful financial aid programs in making their decision to pursue higher education in Alaska.

Additionally, in conjunction with the Alaska Postsecondary

Access & Completion Network (AlaskaCAN), ACPE continues to support and develop collaborative initiatives for reaching the statewide goal of 65% of Alaskans obtaining a postsecondary credential by 2025.

As ACPE looks ahead to 2022, we reflect on the highs and lows of 2021 with gratitude for the lessons learned and partnerships built. We acknowledge the magnitude of the work that lies ahead to successfully support Alaska's workforce needs. It is with passion, motivation, commitment, and inclusivity that we work to ensure pathways to higher education are accessible and meaningful for all Alaskans.

Best Regards,

JOSH BICCHINELLA
ACPE CHAIR

SANA EFIRD
ACPE EXECUTIVE DIRECTOR



ALASKA POSTSECONDARY ACCESS & COMPLETION NETWORK

- ESTABLISHED 2014 -

ACPE COMMISSION MEMBERS

JOSH BICCHINELLA, CHAIR
Private Higher Education

LISA PARKER, VICE CHAIR
*University of Alaska
Board of Regents*

DARROL HARGRAVES
*University of Alaska
Board of Regents*

ANDI STORY
Alaska House of Representatives

DR. KEITH HAMILTON
*Board of Education &
Early Development*

SENATOR MIA COSTELLO
Alaska State Senate

DR. BARBARA ADAMS
General Public

KARLA HEAD
General Public

JOHN BROWN
General Public

DONALD HANDELAND
General Public

RODOLFO GARCIA
Student Representative

TRISH ZUGG
Alaska Workforce Investment Board

.....
VACANT
*Community College
Representative*

VACANT
Private Higher Education

VIEW CURRENT LIST OF MEMBERS AT:
ACPE.ALASKA.GOV/ABOUT-US



AlaskaCAN

is a non-profit organization comprised of nearly 350 representatives from a wide variety of Alaskan stakeholders: K-12 educators, industry, non-profit community organizations, & higher education institutions.

**AlaskaCAN SEEKS
TO INCREASE THE
PERCENTAGE OF WORKING-
AGE ALASKANS WHO
HOLD POSTSECONDARY
CREDENTIALS**

**65%
BY THE YEAR
2025**

Over the course of 2021, AlaskaCAN saw many changes to its Board of Directors through its election process, with more than half of the Board seats being up for reelection and/or previously vacant. The 2021 Board of Directors is a motivated and committed group, representing a multitude of organizations, districts, institutions, and non-profits across Alaska.

To further AlaskaCAN's mission of reaching 65% by 2025, AlaskaCAN took very

intentional steps in 2021 to identify the roles and responsibilities of its Board and Committees to ensure mission alignment. AlaskaCAN developed Committee Action Plan templates utilizing the SMART Goal model to ensure committee initiatives directly aligned with and supported the overarching Strategic Plan and Mission of AlaskaCAN. Additionally, strategic financial planning sessions continued to identify the most effective use of financial resources in support of mission attainment.

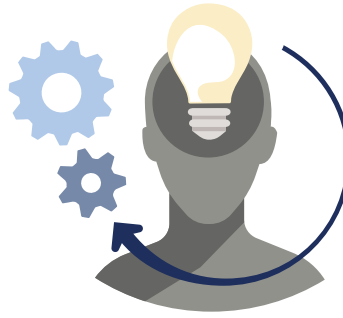


Explore AlaskaCAN's dashboard at:

**65BY2025.ORG/
ABOUT/METRICS**

In early 2022, AlaskaCAN launched its new interactive website with useful resources, like the *Dashboard*, to engage and deliver meaningful content to postsecondary education students and supporters in Alaska. Membership and collaboration were enhanced through our annual AlaskaCAN 2022 Conference, offering an opportunity for new and returning AlaskaCAN members to re-engage and re-energize in our collective efforts towards education and credential attainment across Alaska.

As always, AlaskaCAN's greatest asset is its members. As we look ahead to 2025, we encourage and promote the collective participation and collaboration of our members in order to reach our 65% by 2025 goal. We encourage those who are members to frequently connect through our monthly meetings and quarterly convenings. We also urge those who are not yet members to take time to learn more about AlaskaCAN and the ways in which they can be involved in this important and meaningful work.



2020-22 HIGHLIGHTS

1
CREATION & IMPLEMENTATION OF COMMITTEE ACTION PLANS
Ensuring mission alignment & attainment

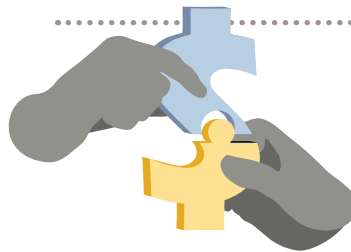


2
DASHBOARD METRICS UPDATE
Launched in early 2022 to identify updated enrollment and completion metrics for Alaskan students



3
RE-BRANDING EFFORTS FOR ENHANCED AWARENESS & RECOGNITION INCLUDING BUT NOT LIMITED TO:

- (1) Naming convention: "The Network" → "AlaskaCAN"
- (2) Development of new, more responsive, & engaging website (launched early 2022)



4
STRATEGIC FINANCIAL PLANNING & PARTNER ENGAGEMENT/FUNDRAISING

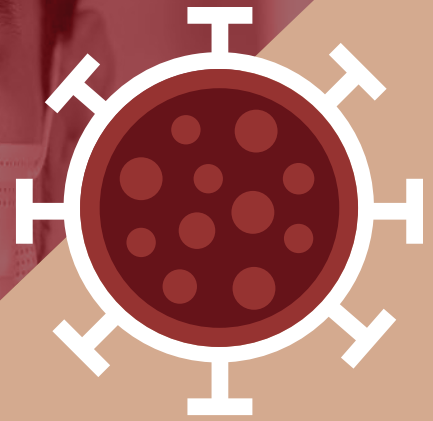


5
HOST SEASONAL CONVENINGS TO HIGHLIGHT CRITICAL POSTSECONDARY ACCESS & ATTAINMENT TOPICS

- (1) **MAY** | Equity & Access: Sharing Dual Credit Resources
- (2) **SEPTEMBER** | Equity & Access: Removing Barriers to Postsecondary Education

COVID | 2020-21

DISRUPTIONS TO ALASKA'S POSTSECONDARY PIPELINE & IMPACTS ON STUDENT SUCCESS



SUMMARY

The COVID-19 pandemic has been a disruptive force to postsecondary education across the country, leaving lasting change in the pandemic's wake. In Alaska, the extent of this change to the postsecondary pipeline has yet to be determined.

Although 2021 was a year of recovery in many aspects, key markers of student success were still below 2019 levels. Recovery of enrollments and student engagement was dampened in part by record levels of job openings and 10-year high wages, where many prospective students chose to meet immediate financial needs by joining the workforce rather than pursuing the long-term benefits of postsecondary education.

On a positive front, the pandemic brought about the opportunity to introduce new technologies to the classroom. With the switch to virtual instruction, both students and educators now have a new familiarity and desire for greater technological presence in education. This change in attitude resulted in many Alaskan institutions continuing to offer digital instruction methods in the post-pandemic recovery term, opening the door for new technological innovations in education in the future.

MARKERS OF STUDENT SUCCESS: ENROLLMENT, PERSISTENCE & GRADUATION

As students felt economic pressure and instability from the pandemic in 2020, postsecondary enrollments, persistence, and completions were affected nationwide.

First-time Freshman Enrollments
A student's first enrollment into a postsecondary institution at any point after graduating high school.

FIRST-TIME FRESHMAN ENROLLMENT:

- There was an unprecedented **10% decrease** in fall 2020 postsecondary enrollments of first-time freshman both in Alaska and nationally.^{1,2}
- Alaska 2-year school enrollments were **less affected** by the impact of the pandemic than 4-year schools (this trend was reversed nationally) (Exhibit 1).^{1,2}
- Alaska 2-year school enrollments are projected to recover **faster** than national 2-year schools (Exhibit 1).^{1,2}

EXHIBIT 1 *Percent change of first-time freshman postsecondary enrollments during 2020 & 2021, 2-year vs. 4-year institutions.*

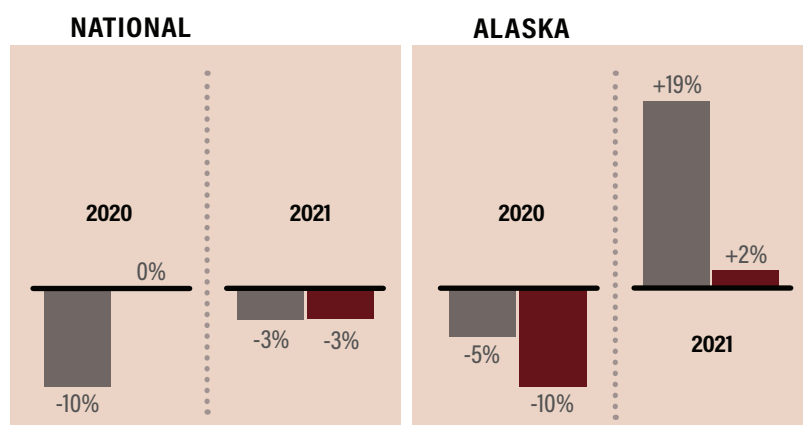


EXHIBIT 2 Number of Alaska first-time freshman enrollments, 2019-2021.

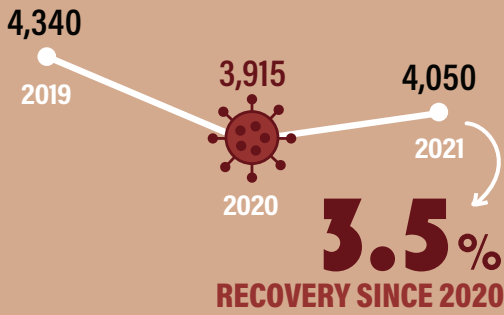
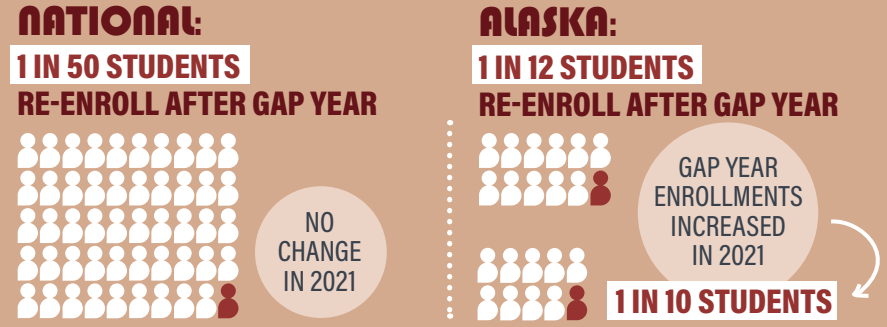


EXHIBIT 3 Alaska vs. national gap year enrollments, pre-pandemic & change following 2020.



ALASKA'S DECREASE IN FIRST-TIME FRESHMAN POSTSECONDARY ENROLLMENTS WAS ACCOMPANIED BY A DECREASE IN THE NUMBER OF HIGH SCHOOL GRADUATES.³



ENROLLMENT RESILIENCY & RECOVERY:

Alaska students already enrolled within the postsecondary pipeline demonstrated resiliency, with higher proportions of Alaskans maintaining enrollment through the pandemic.

- In 2021, Alaska **recovered 3.5%** of its first-time freshman enrollments. In contrast, national enrollments only recovered 0.4% (Exhibit 2).^{1,2}

Taking a 2020 gap year during the pandemic was a commonly reported decision made by prospective students, postponing enrollment until a point in time when uncertainty and financial burdens would be lower.

- Alaska saw a **1.6% increase in gap year enrollments** during the 2021 pandemic recovery period. 10% of Alaska 2020 high school graduates who did not attend postsecondary after graduation enrolled

into higher education as of fall 2021 (Exhibit 3).¹

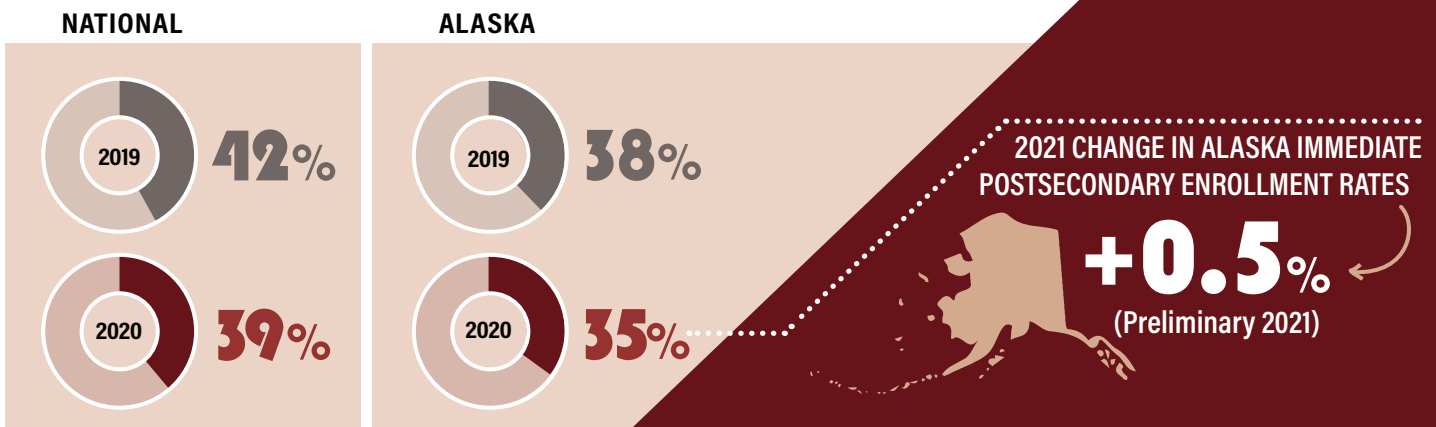
- Nationally there was **no change** to gap year enrollment patterns, with 2% of 2020 gap year students enrolling (Exhibit 3).⁴
- The pandemic brought about disengagement in postsecondary education among high school graduates. In 2020 there was a **3% decrease** in immediate postsecondary enrollment rates both in Alaska and nationally (Exhibit 4).^{1,4}

Immediate Postsecondary Enrollment Rate
Percentage of high school graduates that enroll in postsecondary education within the term after graduation

Although Alaska saw some postsecondary enrollment recovery in 2021, enrollment numbers are still much lower than in 2019.

It is not yet known what lasting changes in student enrollment patterns will be, but lower numbers of students starting or completing college will result in fewer well-trained individuals entering the workforce.

EXHIBIT 4 Alaska vs. national immediate postsecondary enrollment rates of high school graduates, 2019 & 2020.



PERSISTENCE

- In Alaska **no significant decrease in first-year persistence was seen between 2019-2020**, and the persistence rate of the 2019 postsecondary education cohort actually **increased 2%** over that of the 2018 cohort (Exhibit 5).⁵
- Nationally, the persistence rate **decreased by 2%** in the first-to-second year persistence rate of 2019 freshman compared to 2018 freshman (Exhibit 5).⁵



First-to-Second Year Persistence Rate

Percent of students that first enrolled in postsecondary education one year that also enrolled in the next year.

EXHIBIT 5 Below: Alaska vs. national persistence rates, 2018 & 2019 cohorts.

COMPLETION

- Nationally and in Alaska, a **1% increase was observed in the 6-year graduation rate** of the 2015 high school cohort compared to the 2014 class, which could indicate that students close to graduation during the pandemic were more likely to adapt during the pandemic's uncertainty and complete their program (Exhibit 6).^{1,6}
- Completion rates for 2-year schools **decreased** both in Alaska and nationally for the 2015 high school cohort compared to the 2014 class. Alaska 2-year schools had a **-10% change to completions** (Exhibit 6).

INSTITUTION CHANGES

In response to the pandemic's impact on postsecondary institutions, grants were issued to colleges by the U.S. Department of Education Stabilization Fund (ESF) for the purpose of supporting students.⁷

IN ALASKA, 2-YEAR SCHOOL COMPLETIONS DROPPED 5X MORE THAN 4-YEAR SCHOOLS.



With increased funding through the ESF, institutions could accommodate students' needs by implementing virtual education and eliminating the need for many on campus and in-person gatherings by incorporating a greater technological presence in the classroom.

TECHNOLOGY IN THE CLASSROOM

In a national study from fall 2021, students were surveyed regarding their opinions of the introduction of online learning into postsecondary education.⁸

- The survey showed that opinions of digital instruction became more positive over the course

of the pandemic, with students and educators having a greater acceptance and desire for technology in the classroom.

- **A majority of students** reported preferring the option to take further online or hybrid courses going forward (Exhibit 7).⁸

ALASKA INSTITUTION SURVEY RESPONSES

The 2022 ACPE Higher Education Survey found that virtual alternatives to recruitment, admissions, and education remained crucial offerings through the pandemic. The 11 surveyed Alaska postsecondary institutions reported the following:

- **Over 70%** implemented virtual recruitment, changed admissions processes, and changed residency accommodations during the 2021-22 term.⁹
- **Over 45%** continued to offer virtual or hybrid education for students in 2021-2022 (Exhibit 7).⁹

NATIONAL: 7 IN 10 STUDENTS PERSIST INTO 2ND YEAR



ALASKA: 5 IN 10 STUDENTS PERSIST INTO 2ND YEAR



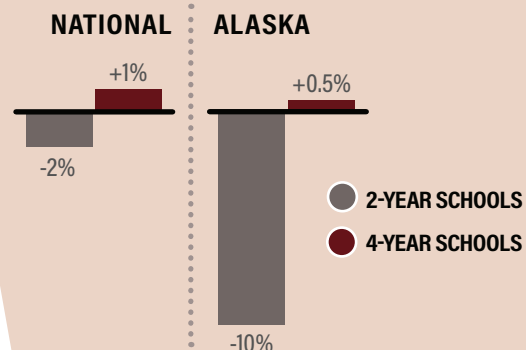
76%
2019

74%
2020

54%
2019

56%
2020

EXHIBIT 6 Alaska vs. national percent change in 6-year completion rates of 2015 postsecondary entering cohort (2-year vs. 4-year institutions).



SEE MORE SURVEY STATS ON PG. 40

EXHIBIT 7 Student responses regarding technology in the classroom, from ACPE Higher Education Survey (2022) & national Cengage survey (fall 2021).

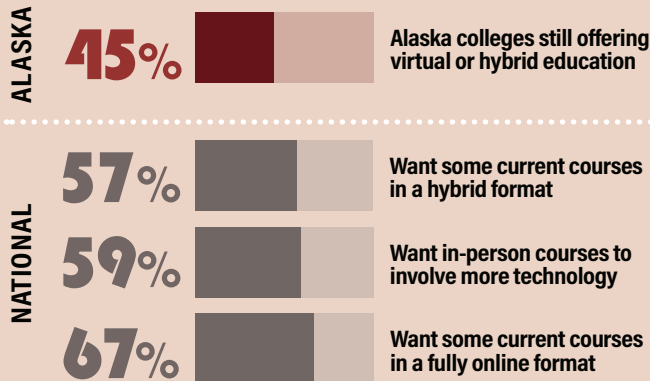
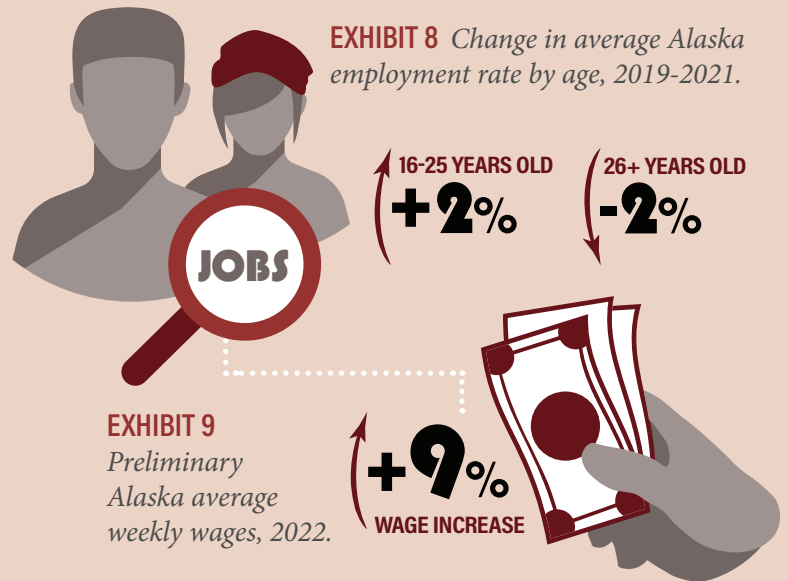


EXHIBIT 8 Change in average Alaska employment rate by age, 2019-2021.



WORKFORCE LANDSCAPE

Finances and uncertainty were reported as key factors that impacted student postsecondary decisions in 2020. With 2021 seeing record levels of job openings and 10-year high wages, the labor market presented a captivating option for prospective students to justify disengagement from the postsecondary pipeline.¹⁰

JOBS & UNEMPLOYMENT

- Alaska experienced a record **36% increase** in job openings from 2019 to 2022.¹¹



DISENGAGEMENT

FROM POSTSECONDARY EDUCATION BOTH IN ALASKA & NATIONALLY APPEARS TO BE EXACERBATED BY A NOW RECOVERED & ABUNDANT JOB MARKET.²

- Although unemployment in Alaska is approximately back to 2019 levels, total employment numbers are lower than in 2019. In 2021, total employment was **4% lower in Alaska and 2% lower nationally**.¹²

EMPLOYMENT BY AGE

- There was a **2% increase** in 2021 average annual Alaska employment rate compared to 2019 for residents 16-25 years old (traditional postsecondary age group) (Exhibit 8).¹³
- There was a **2% decrease** in 2021 average annual Alaska employment rate compared to 2019 for residents 26 years and older (Exhibit 8).¹³

WAGE INCREASES

- Preliminary data shows Alaska average weekly wages **9% higher in 2022** than 2019 (Exhibit 9).¹⁴

IN CONCLUSION

The negative impacts of the pandemic on student success (fewer high school graduates entering college, fewer college students completing programs) will continue to influence the postsecondary pipeline for years.

However, an abundant labor market presents opportunities for postsecondary graduates. Additionally, the long-term potential of virtual instruction to revolutionize education leaves a positive outlook for the future.

REFERENCES

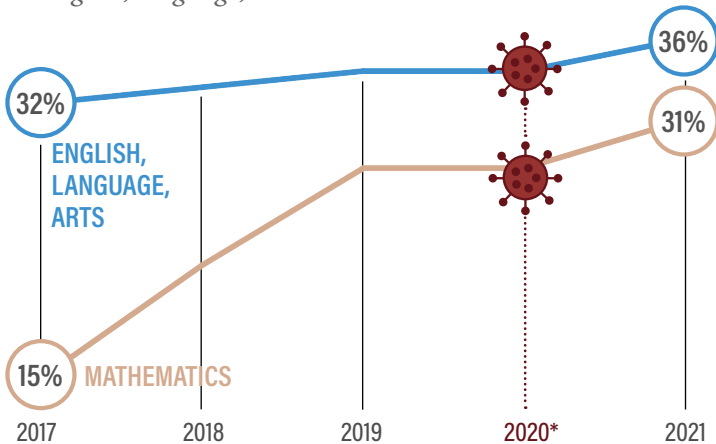
- National Student Clearinghouse (NSC), StudentTracker Fall 2021, available at: StudentTracker - National Student Clearinghouse
- National Student Clearinghouse (NSC), Current Term Enrollment Estimates Report Fall 2021, available at: <https://nscresearchcenter.org/current-term-enrollment-estimates/>
- Alaska Department of Education and Early Development (ADEED), Graduation and Dropout Rates Fact Sheet, available at: Data Center - Education and Early Development (alaska.gov)
- National Student Clearinghouse (NSC), Highschool Benchmark Report 2021, available at: 2021_HSBenchmarksReport.pdf (nsc-researchcenter.org)
- National Student Clearinghouse (NSC), Persistence and Retention Report 2021, available at: <https://nscresearchcenter.org/wp-content/uploads/PersistenceRetention2021.pdf>
- National Student Clearinghouse (NSC), Completions Report 2021, available at: Completions_Report_2021.pdf (nscresearchcenter.org)
- US Dept of Education, Education Relief Fund (ERF), available at: <https://covid-relief-data.ed.gov/profile/state/AK>
- Cengage, Digital Pulse Survey Fall 2021, available at: Digital Learning Pulse Survey Findings (cengage.com)
- Alaska Commission on Postsecondary Education (ACPE), 2022 Alaska Higher Education Almanac Institution Survey Responses
- National Student Clearinghouse (NSC), Hot Labor Market Creating Competition For Colleges, available at: <https://www.studentclearinghouse.org/nscblog/hot-labor-market-creating-competition-for-colleges/>
- US Bureau of Labor Statistics (BLS), Job Openings and Labor Turnover Survey, available at: <https://www.bls.gov/jlt/>
- US Bureau of Labor Statistics (BLS), Current Employment Statistics (CES), available at: <https://www.bls.gov/data>
- US Census Bureau, Monthly Current Population Survey (CPS) Microdata, available at: <https://data.census.gov/mdat/#/>
- US Bureau of Labor Statistics (BLS), Quarterly Census of Employment & Wages (QCEW), available at: <https://www.bls.gov/data>

HIGHER EDUCATION: ALASKA CONTEXT

COLLEGE PREPARATION DURING HIGH SCHOOL

The proficiency of Alaska's high school students according to the Alaska Performance Evaluation for Alaska's Schools (PEAKS) assessment has improved over the past five years (Exhibit 10). Class of 2021 eligibility and use of the Alaska Performance Scholarship (APS) is shown in Exhibit 11.

EXHIBIT 10 PEAKS assessment, percent of high school class of 2021 (9th graders tested 2021) advanced or proficient in English, language, arts and mathematics.



*NOTE: No measurement in 2020, canceled due to the pandemic

ADVANCED OR PROFICIENT

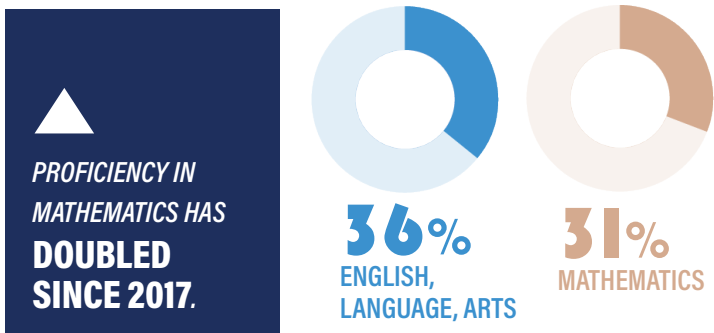


EXHIBIT 11

Alaska Performance Scholarship (APS), class of 2021.

High School Graduates **ELIGIBLE** for the APS award



RECIPIENTS of the APS (students that went on to attend an Alaska postsecondary institution)



NEARLY ALL

APS RECIPIENTS GO ON TO USE THE APS FOR COLLEGIATE STUDIES, WITH ONLY A SMALL FRACTION USING THE AWARD FOR VOCATIONAL PROGRAMS.



STANDARDIZED TESTING: CLASS OF 2021

National standardized test participation declined for the high school graduating class of 2021. The state of Alaska saw a decline of 17% in ACT participation (Exhibit 12) and a 14% decline in SAT participation from 2020 (Exhibit 13).

EXHIBIT 12 ACT testing stats, Alaska vs. national (class of 2021). When compared to states with similar ACT participation rates, Alaska's score ranked lowest. Similar states (19-14% participation rates) were Illinois (25.2), Colorado (23.6), Idaho (23.0), and Indiana (23.1).

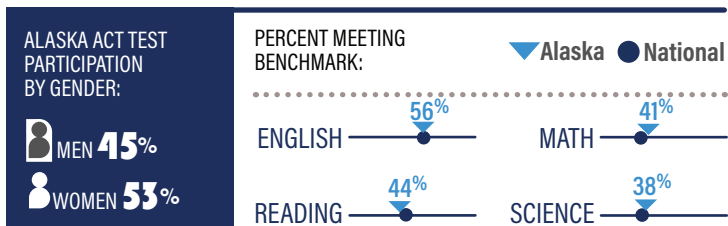
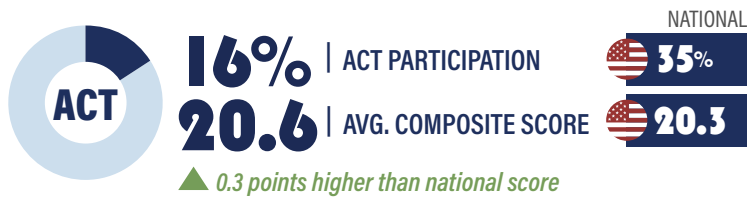
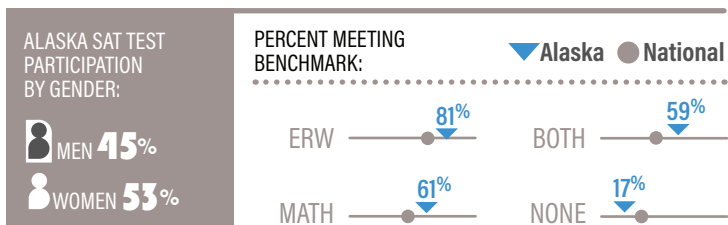
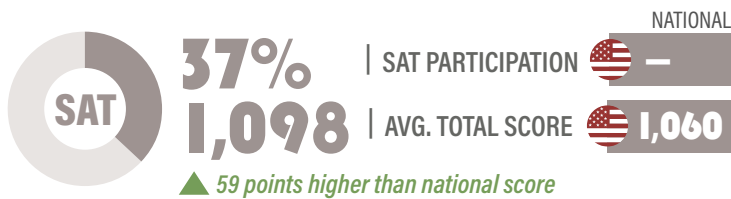


EXHIBIT 13 SAT testing stats, Alaska vs. national (class of 2021). When compared to states with similar SAT participation rates, Alaska's score ranked in the middle. Similar states (23-27% participation rates) were North Carolina (1150), California (1057), Hawaii (1144), and Washington (1072).



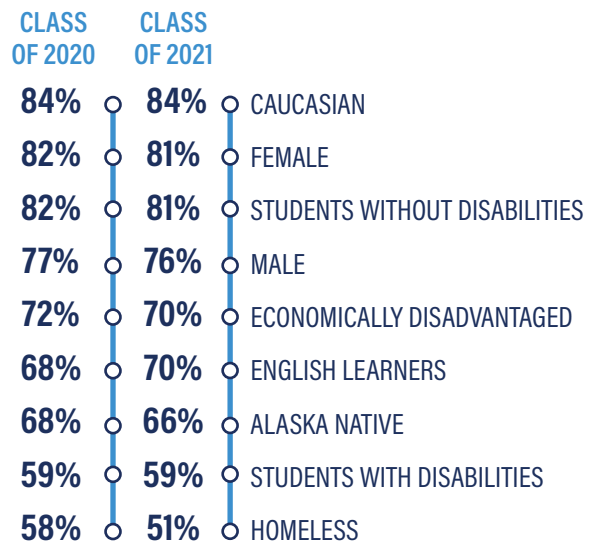
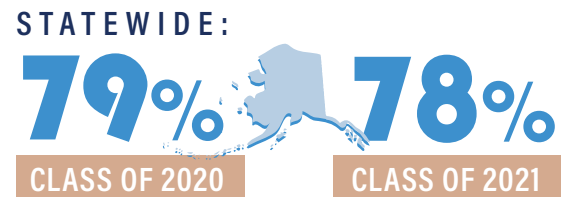
IN ALASKA, MORE WOMEN TAKE PLACEMENT TESTS THAN MEN. HOWEVER, ON AVERAGE MEN SCORE HIGHER THAN WOMEN.

NOTE: Test participation by gender for ACT & SAT do not equal 100% due to 'Another/No Response' options

HIGH SCHOOL GRADUATION RATES

The National Adjusted Cohort Graduation Rate (ACGR) for public high school students for 2018-2019 was **85%**. Alaska's rate that same year was **79%**, ranking **49th** in the country ahead of New Mexico, and just behind Oregon and Arizona.

EXHIBIT 14 Statewide public Alaska high school graduation rates for class of 2020 & 2021. Additional graduation rates for select categories of students are also listed below.



PLACEMENT TEST WAIVERS



Nationwide waivers during 2020 & 2021 were in place for performance evaluations & placement tests due to the pandemic. These waivers include the PEAKS assessment & SAT/ACT placement tests.

COLLEGE ENROLLMENTS OF HIGH SCHOOL GRADUATES

The past 8 years has seen an average 2% decrease in the fraction of high school graduates enrolled in college 1-year following graduation (Exhibit 15). Of those enrolled in postsecondary education from Alaska's high school class of 2020, half attended in-state, representing 9% fewer in-state postsecondary enrollments than from the class of 2019 (Exhibit 16). The postsecondary enrollment and progress of class of 2014 is given in Exhibit 17.

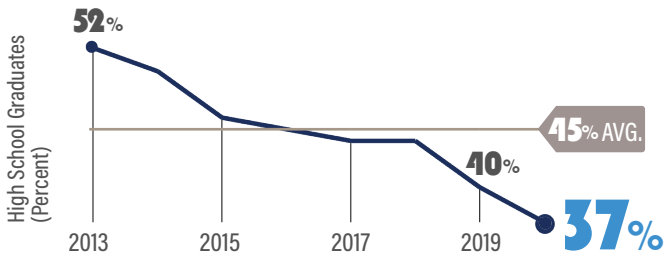
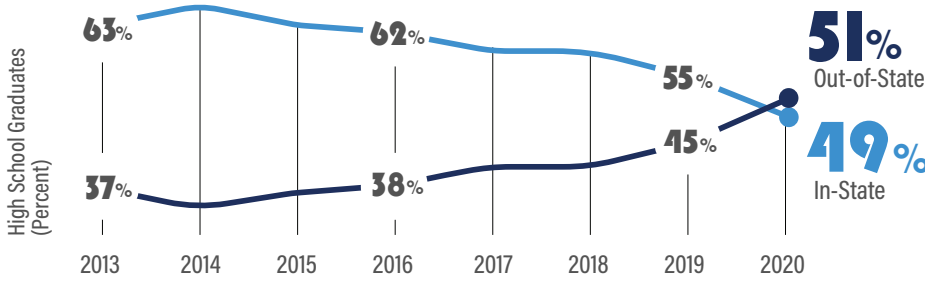


EXHIBIT 15 (LEFT) Alaska's class of 2020 high school graduate enrollments. 37% were enrolled in a postsecondary institution within a year following their high school graduation.

EXHIBIT 16 (BELOW) Proportion of Alaska high school graduates enrolling in-state vs. out-of-state.



2 OF 5

ALASKA HIGH SCHOOL GRADUATES FROM THE CLASS OF 2020 ENROLLED IN COLLEGE WITHIN 1-YEAR FOLLOWING HIGH SCHOOL GRADUATION.

In-state & out-of-state enrollments for class of 2020

WERE NEARLY EQUAL

1,500 STUDENTS EACH

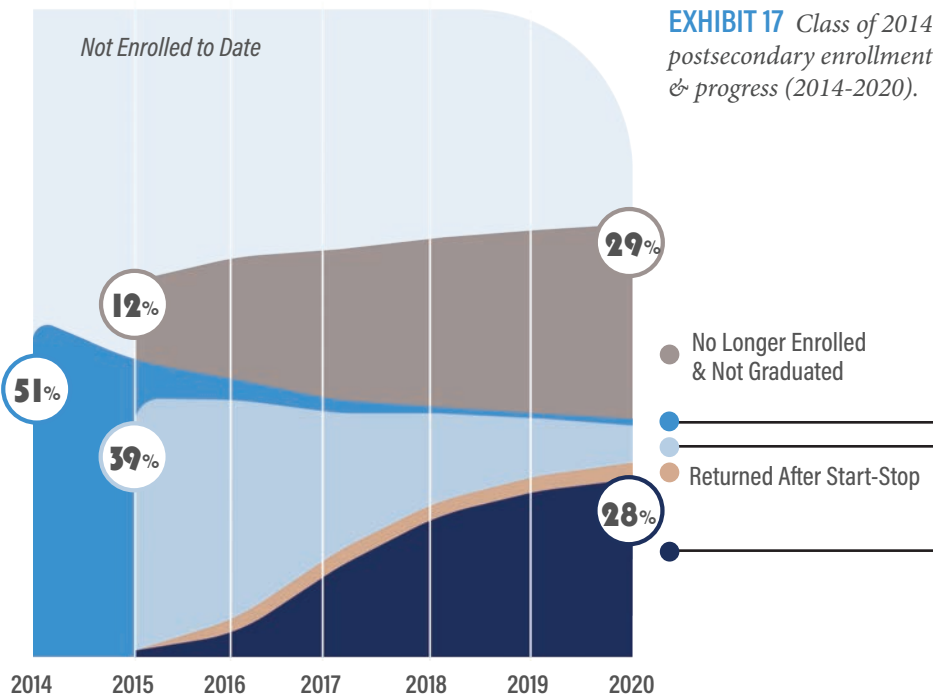


EXHIBIT 17 Class of 2014 postsecondary enrollment & progress (2014-2020).

NEW TO COLLEGE

2 out of 4 students enrolled in college within a year of graduating high school.

PERSISTED INTO 2ND YEAR

3 out of 4 (74%) enrolled students persisted into their 2nd year of college.

GRADUATED

2 out of 4 students (47%) that started college in 2014 completed their program by 2020.

DISTANCE EDUCATION WUE & NC-SARA HIGHLIGHTS

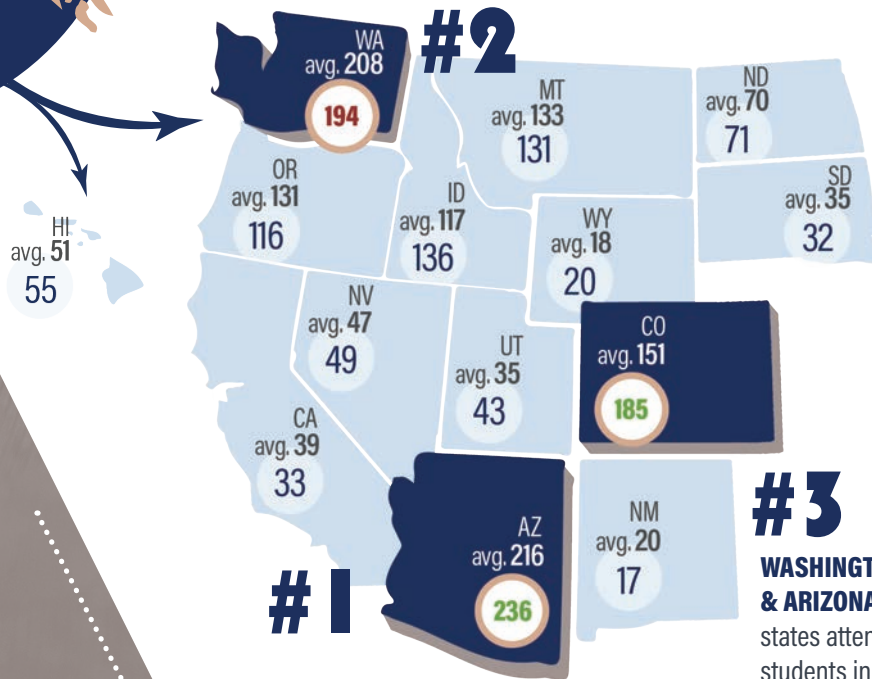


EXHIBIT 20 Distribution of Alaska WUE students to other WUE states (average, 2020 totals) & top universities (schools with the most Alaska WUE students).



TOP SCHOOLS ATTENDED BY ALASKA STUDENTS (AY21-22):

- NORTHERN ARIZONA UNIVERSITY
183 students
- MONTANA STATE UNIVERSITY BOZEMAN
118 students
- WASHINGTON STATE UNIVERSITY
70 students



#3 WASHINGTON, COLORADO, & ARIZONA remain the top states attended by Alaska students in the WUE program.

EXHIBIT 18
WESTERN UNDERGRADUATE EXCHANGE (WUE) HIGHLIGHTS

AY 2019-20	AY 2020-21
1,314	1,416
ALASKA RESIDENTS ENROLLED OUT-OF-STATE THROUGH WUE	

AY 2019-20	AY 2020-21
\$13	\$16
MILLION	

\$ TUITION SAVED BY STUDENTS THROUGH WUE

EXHIBIT 21 NATIONAL COUNCIL FOR STATE AUTHORIZATION RECIPROcity AGREEMENTS (NC-SARA) HIGHLIGHTS (FALL 2020)

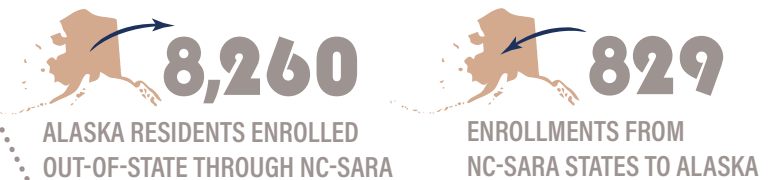
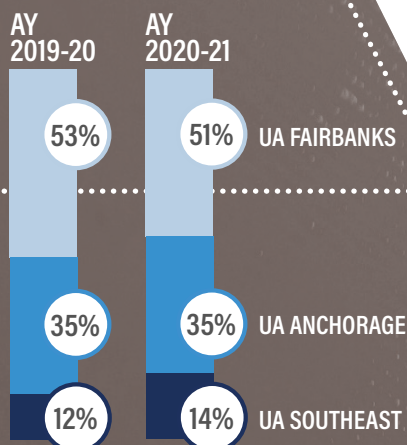


EXHIBIT 19 University of Alaska (UA) participation in WUE.

AY 2019-20	AY 2020-21
375	401
OUT-OF-STATE STUDENTS ATTENDING UA THROUGH WUE	



TOP STATES RECEIVING ALASKA STUDENTS:

- Arizona **1,129**
- Utah **794**
- West Virginia **768**
- Texas **457**
- Virginia **440**

TOP STATES SENDING STUDENTS TO ALASKA:

- Washington **134**
- Texas **68**
- Oregon **57**
- Colorado **44**
- Arizona **35**



Exhibit 25

FIRST-TIME FRESHMAN POSTSECONDARY ENROLLMENTS

DEFINITION:

First-time Freshman Enrollments a student's first enrollment into a postsecondary institution at any point after graduating high school.

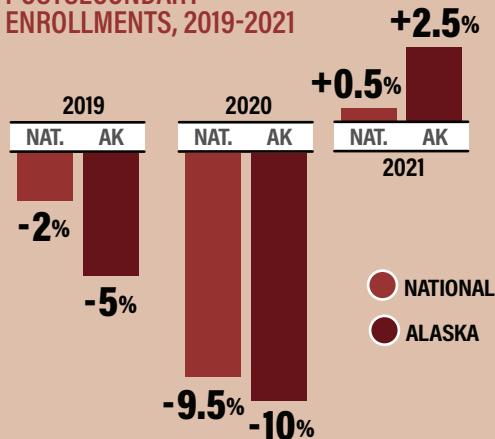
The 2020 academic year saw an unprecedented decrease in postsecondary enrollments:

10% DECREASE IN FIRST-TIME FRESHMAN POSTSECONDARY ENROLLMENTS BOTH IN ALASKA AND NATIONALLY

1.3x GREATER RECOVERY

in 2021 of Alaska first-time freshman enrollments than national averages

PERCENT CHANGE IN TOTAL FIRST-TIME FRESHMAN POSTSECONDARY ENROLLMENTS, 2019-2021



SOURCE: NATIONAL STUDENT CLEARINGHOUSE (NSC)

ALASKA POSTSECONDARY ENROLLMENT TRENDS

12-month enrollment totals (undergraduate & graduate enrollments) continue to follow a declining trend at Alaska postsecondary institutions for academic years 2019 and 2020 (Exhibit 22-24). Fall 2019 and 2020 enrollment breakdowns by Alaska institution are given in Exhibit 26.

EXHIBIT 22

Total enrollments, AY2011-2020

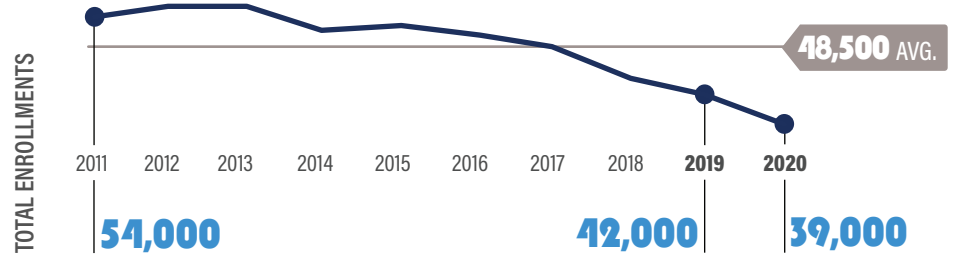


EXHIBIT 23

Undergraduate enrollment trend, AY2011-2020 (percent difference from the avg.)

13,800

fewer undergraduates than 10 years ago.

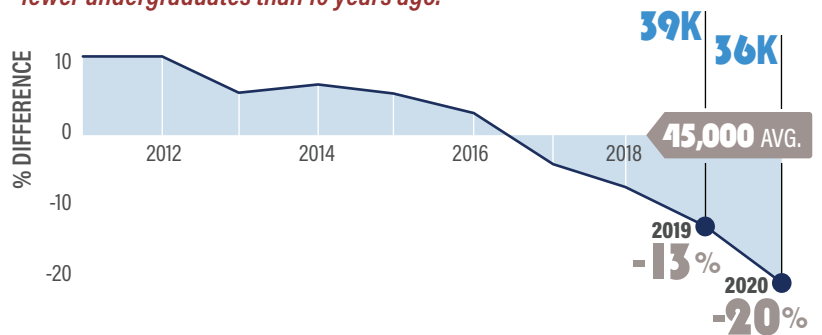
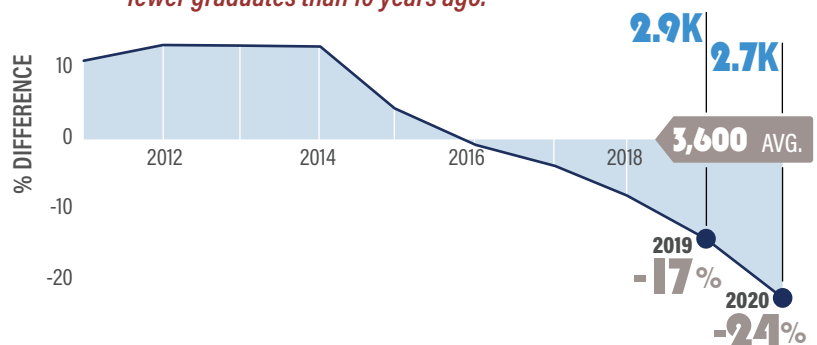


EXHIBIT 24

Graduate enrollment trend, AY2011-2020 (percent difference from the avg.)

1,200

fewer graduates than 10 years ago.



FALL ENROLLMENTS BY INSTITUTION

 ENROLLMENT TOTALS, FALL 2019 & 2020
  % CHANGE, 2019-2020
  TREND, 2011-2020 % DIFFERENCE FROM AVG.

UNIVERSITY OF ALASKA ANCHORAGE

ENROLLMENT TOTALS:

 Fall 2019	Fall 2020
12,770	11,950


PERCENT CHANGE: 2019-2020 **▼ -6%**

TREND | 2011-2020: *Percent Difference from the Average*



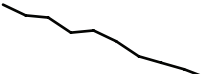
UNIVERSITY OF ALASKA FAIRBANKS

ENROLLMENT TOTALS:

 Fall 2019	Fall 2020
7,180	6,810

PERCENT CHANGE: 2019-2020 **▼ -5%**

TREND | 2011-2020: *Percent Difference from the Average*




UNIVERSITY OF ALASKA SOUTHEAST

ENROLLMENT TOTALS:

 Fall 2019	Fall 2020
2,150	2,070

PERCENT CHANGE: 2019-2020 **▼ -4%**

TREND | 2011-2020: *Percent Difference from the Average*



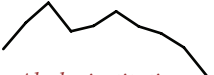
ALASKA VOCATIONAL TECHNICAL CENTER

ENROLLMENT TOTALS:

 Fall 2019	Fall 2020
630	190*

PERCENT CHANGE: 2019-2020 **▼ -70%***

TREND | 2011-2020: *Percent Difference from the Average*



**Largest change across Alaska institutions*


ALASKA PACIFIC UNIVERSITY

ENROLLMENT TOTALS:

 Fall 2019	Fall 2020
530	490


PERCENT CHANGE: 2019-2020 **▼ -7%**

TREND | 2011-2020: *Percent Difference from the Average*



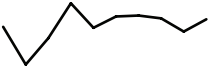
ALASKA CAREER COLLEGE

ENROLLMENTS TOTALS:

 Fall 2019	Fall 2020
360	410

PERCENT CHANGE: 2019-2020 **▲ 14%**

TREND | 2011-2020: *Percent Difference from the Average*




ILISAGVIK COLLEGE

ENROLLMENT TOTALS:

 Fall 2019	Fall 2020
230	230

PERCENT CHANGE: 2019-2020 **▶ 0%**

TREND | 2011-2020: *Percent Difference from the Average*



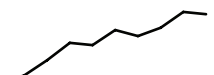
ALASKA CHRISTIAN COLLEGE

ENROLLMENT TOTALS:

 Fall 2019	Fall 2020
100	90

PERCENT CHANGE: 2019-2020 **▼ -2%**

TREND | 2011-2020: *Percent Difference from the Average*




ALASKA BIBLE COLLEGE

ENROLLMENT TOTALS:

 Fall 2019	Fall 2020
40	40

PERCENT CHANGE: 2019-2020 **▶ 0%**

TREND | 2011-2020: *Percent Difference from the Average*



COMPLETIONS

The majority of Alaska postsecondary institutions saw graduation rates increase for first-time, full-time freshman within 150% of normal time between 2019 and 2020 (Exhibit 27). Net rates of completions by degree type have also increased overall during the past 5 years. The greatest change has been with Degree/Certificate-seeking students at 2-year institutions and Other Degree/Certificate-seeking students at 4-year institutions (Exhibit 28).

EXHIBIT 27 First-time, full-time completers and graduation rates at Alaska postsecondary institutions within 150% of normal time, by institution (IPEDS).



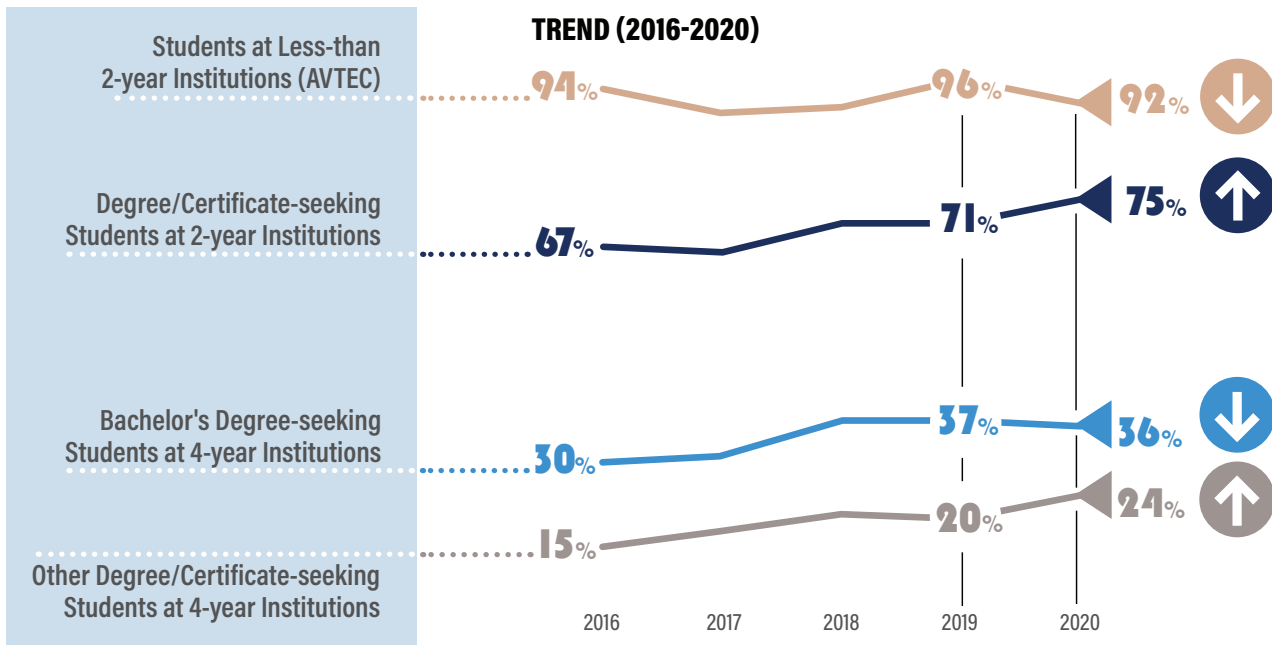
	NUMBER OF COMPLETERS			150% GRADUATION RATE			CHANGE FROM 2019
	2018	2019	2020 	2018	2019	2020 	
University of Alaska Anchorage (UAA):	432	408	418	30	29	30	+3%
University of Alaska Fairbanks (UAF):	240	271	286	32	35	39	+10%
Alaska Career College:	314	252	281	73	75	79	+5%
Alaska Vocational Technical Center (AVTEC):	258	181	164	91	96	92	-4%
University of Alaska Southeast (UAS):	69	41	27	36	26	18	-44%
Alaska Pacific University (APU):	15	13	10	56	45	56	+20%
Ilisagvik College:	2	6	7	13	29	35	+17%
Alaska Bible College:	3	4	5	38	40	63	+37%
Alaska Christian College:	5	6	5	25	19	19	0%

EXHIBIT 28 Graduation rates by degree/program type, academic year 2016-2020 (completers within 150% of normal time).



CREDENTIALS

Nearly half of all education credentials given in 2020 at Alaska postsecondary institutions were Bachelor's degrees (Exhibit 29), with the top bachelor's discipline ranked as *Business Management, Marketing, & Related Support Services* (Exhibit 30). Certificates below bachelor's degree were the most common credential earned by Alaska Natives (Exhibit 31), and 1.8 times the amount of credentials went to women than men (Exhibit 32).

EXHIBIT 29

Number of degrees & certificates awarded at Alaska postsecondary institutions (2020AY).

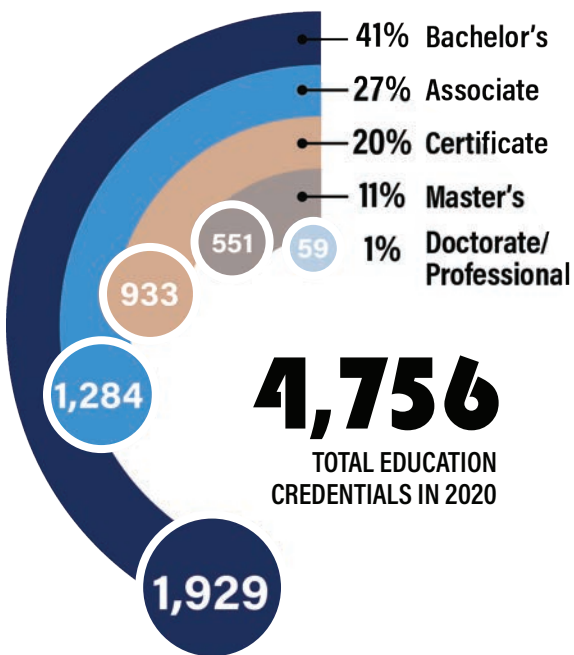


EXHIBIT 30

Top 5 disciplines among Bachelor's degrees awarded (2020AY).



EXHIBIT 31

Proportion of education credentials at Alaska postsecondary institutions received by Alaska Native/American Indian students (2020AY):

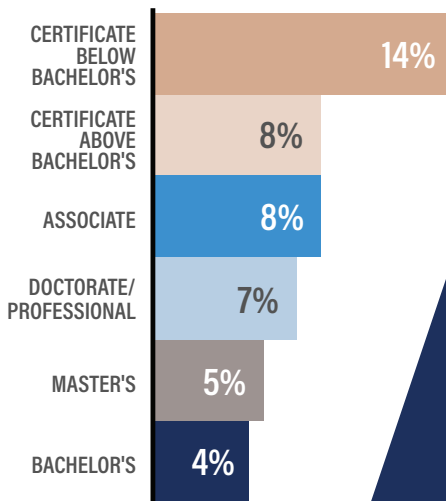
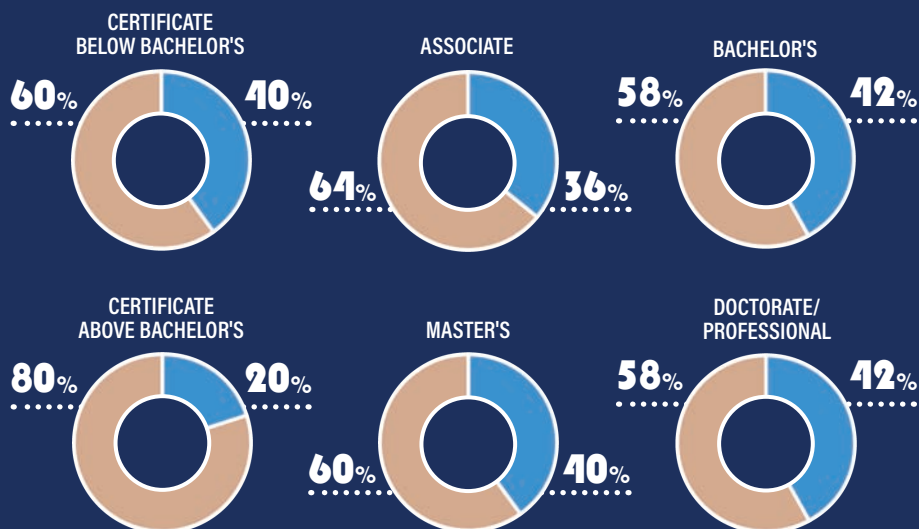


EXHIBIT 32

Education credential breakdown by gender (2020AY).

WOMEN MEN



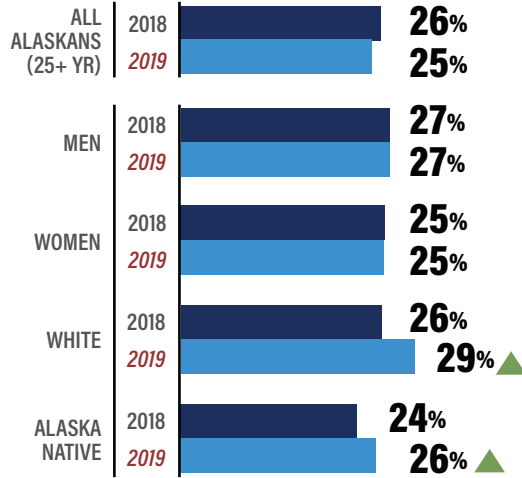
EDUCATION ATTAINMENT

About a quarter of Alaskans 25 & older have attended some college but have not completed a degree program.

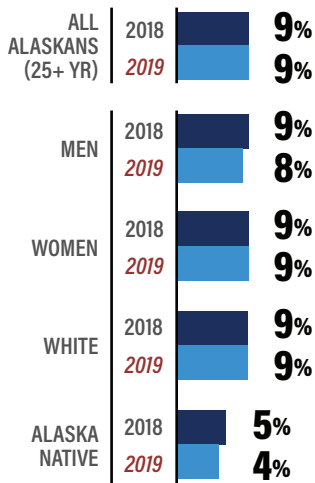
EXHIBIT 33 Education attainment of Alaska residents 25 years & older (2018 & 2019). Certificate attainment rates are provided by AlaskaCAN (2018 & 2021).

NOTE: 2019 attainment values from U.S. Census Bureau American Community Survey (ACS) 5-Year Estimates. 2018 values are from ACS 1-Year Estimates (see Data Notes, Pg. 43)

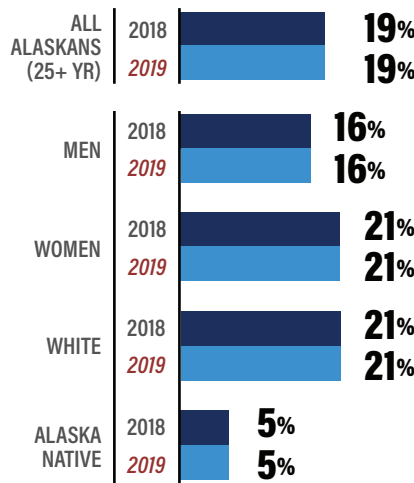
SOME COLLEGE, NO DEGREE



ASSOCIATE DEGREE

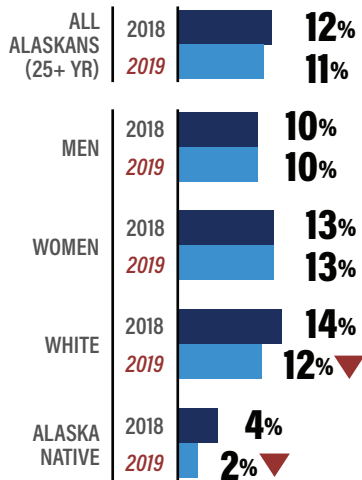


BACHELOR'S DEGREE



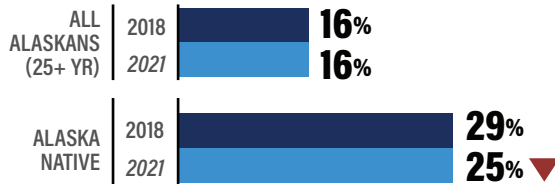
♀♂
IN ALASKA, WOMEN HOLD MORE BACHELOR'S & MASTER'S DEGREES THAN MEN

GRADUATE DEGREE



CERTIFICATE

AlaskaCAN!
65BY2025.ORG/METRICS



1 IN 5
ALASKANS 25 YEARS & OLDER HOLD A BACHELOR'S DEGREE.



Exhibit 36

ECONOMIC RECOVERY FOLLOWING THE PANDEMIC

The number of jobs lost in Alaska as a result of the pandemic were not as high as originally projected (2019-2020):

TOTAL JOBS LOST: 24,300

2020: -7% DECREASE IN ALASKA EMPLOYMENT

2021: 3% INCREASE IN ALASKA EMPLOYMENT

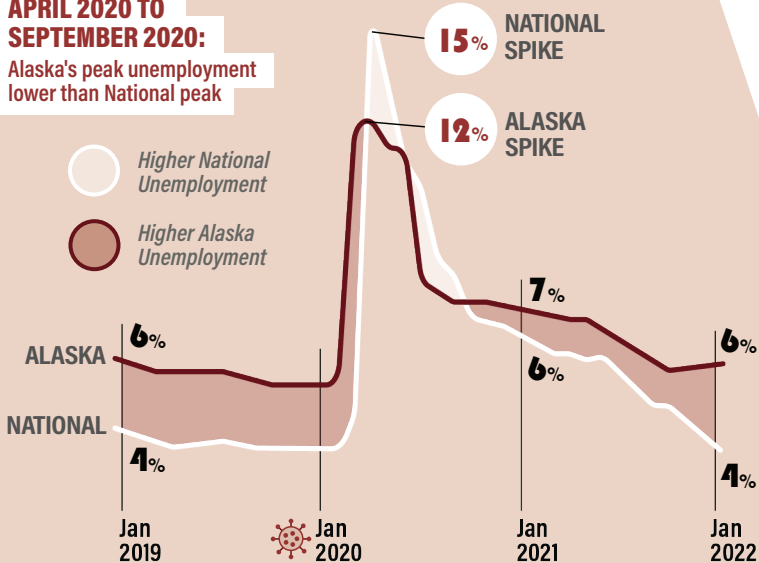
The early 2020 unemployment spikes due to the pandemic were greater nationally than in Alaska, despite Alaska's 2% higher-than-national unemployment rate prior to the pandemic.

Alaska was slower to economically recover compared to national rates of recovery. However as of 2022, unemployment has returned to rates similar to the high end of 2019 in Alaska and Nationally.

ALASKA VS. NATIONAL UNEMPLOYMENT RATES (JANUARY 2019 - JANUARY 2022)

APRIL 2020 TO SEPTEMBER 2020:

Alaska's peak unemployment lower than National peak



SOURCE: U.S. BUREAU OF LABOR STATISTICS (BLS)

ECONOMIC IMPACT

Projected Jobs/Wages (Exhibit 34) & Median Earnings (Exhibit 35).

EXHIBIT 34 Projected job openings (2018-2028) and average annual wages in the Alaska workforce, by educational attainment.

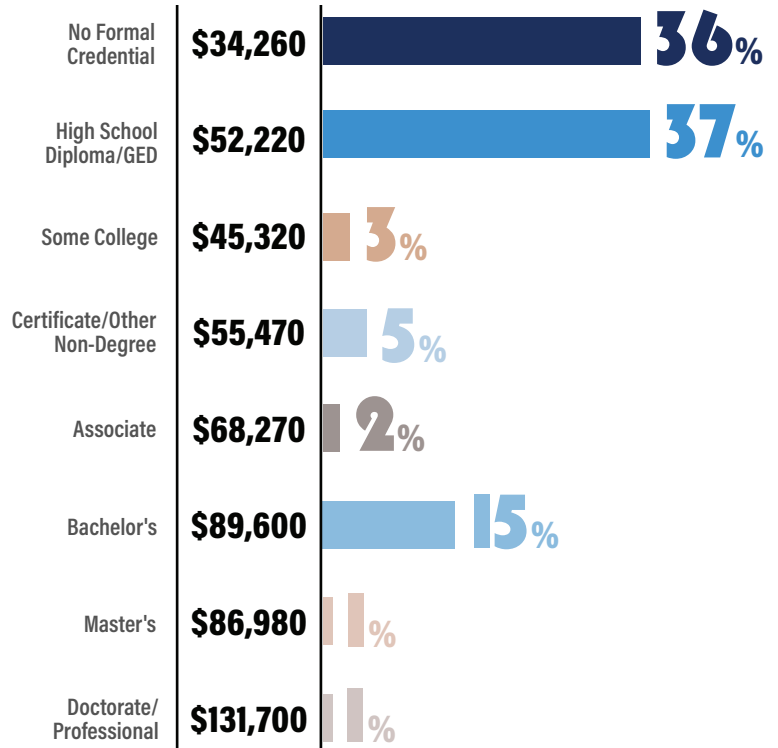
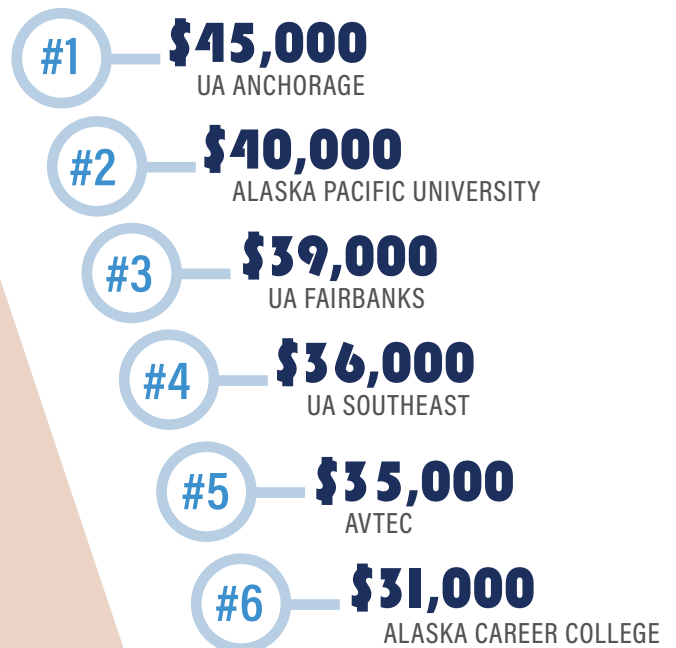


EXHIBIT 35 Median earnings of students 10 years after first enrollment who received federal financial aid, by institution.



HIGHER EDUCATION: NATIONAL CONTEXT

COMPARING ALASKA WITH NATIONAL RANKINGS OF KEY METRICS RELATED TO HIGHER EDUCATION ENROLLMENTS & OUTCOMES



HIGH SCHOOL GRADUATE ENROLLMENTS

Alaska vs. national position metric highlights, class of 2019 & 2020 (Exhibit 37-39).

EXHIBIT 37 Men vs. women high school graduate postsecondary enrollments in Alaska vs. national average, class of 2019 & 2020.

3 OUT OF 5 HIGH SCHOOL GRADUATES ENROLLED IN COLLEGE ARE WOMEN, BOTH IN ALASKA & NATIONWIDE.

CLASS OF 2019



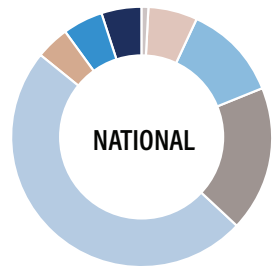
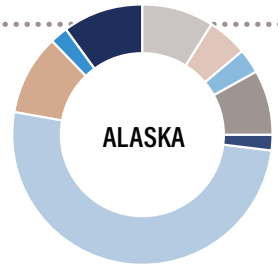
CLASS OF 2020



EXHIBIT 38 Race/ethnicity breakdown of high school graduate postsecondary enrollments in Alaska vs. national average, class of 2019 & 2020.

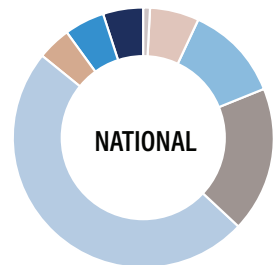
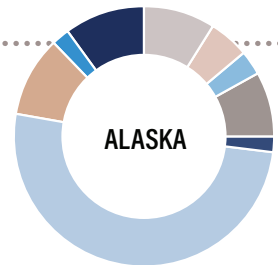
CLASS OF 2019

	AK	NAT.
Alaska Native, American Indian	9%	<1%
Asian	5%	7%
Black, African American	3%	12%
Hispanic, Latino	8%	18%
Hawaiian, Pacific Islander	2%	<1%
White	51%	49%
Two or More	10%	4%
Non-Resident, Alien	2%	5%
Unknown	10%	4%



CLASS OF 2020

	AK	NAT.
Alaska Native, American Indian	9%	<1%
Asian	5%	7%
Black, African American	3%	12%
Hispanic, Latino	8%	19%
Hawaiian, Pacific Islander	2%	<1%
White	51%	49%
Two or More	10%	4%
Non-Resident, Alien	2%	4%
Unknown	10%	4%



NUMBER OF ALASKA NATIVE COLLEGE ENROLLMENTS IN ALASKA: **2,070**



EXHIBIT 40

NATIONAL
CONTEXT DATA:
TABLE A

	EDUCATION ATTAINMENT (2020 ACS, 1-Year)				GRADUATION RATES			
	Some College	Associate	Bachelor's	Graduate	6-Year Rate, 4-Year Institutions		3-Year Rate, 2-Year Institutions	
					2019 (Cohort 2013)	2020 (Cohort 2014)	2019 (Cohort 2016)	2020 (Cohort 2017)

NATIONAL	20%	9%	21%	14%	60%	60%	35%	36%
Alabama	22%	9%	17%	11%	55%	57%	27%	27%
ALASKA	25%	8%	20%	12%	31%	32%	71%	75%
Arizona	24%	9%	20%	13%	39%	43%	32%	32%
Arkansas	21%	8%	16%	9%	50%	51%	33%	33%
California	20%	8%	23%	14%	65%	66%	39%	39%
Colorado	20%	8%	27%	17%	52%	54%	62%	56%
Connecticut	16%	8%	23%	19%	71%	70%	25%	29%
Delaware	20%	8%	20%	15%	54%	59%	58%	44%
Florida	19%	10%	21%	13%	52%	54%	57%	57%
Georgia	20%	8%	21%	14%	46%	47%	40%	41%
Hawaii	20%	11%	23%	13%	51%	53%	26%	28%
Idaho	26%	10%	21%	10%	49%	50%	33%	33%
Illinois	20%	8%	23%	15%	64%	64%	34%	35%
Indiana	20%	9%	18%	11%	62%	63%	31%	32%
Iowa	20%	12%	20%	10%	69%	68%	37%	37%
Kansas	23%	9%	22%	13%	54%	54%	36%	39%
Kentucky	20%	9%	16%	11%	52%	53%	35%	37%
Louisiana	21%	7%	17%	10%	54%	55%	26%	27%
Maine	18%	10%	21%	12%	60%	60%	28%	28%
Maryland	18%	7%	22%	21%	71%	71%	25%	29%
Massachusetts	15%	8%	26%	21%	76%	76%	22%	22%
Michigan	22%	10%	20%	12%	58%	61%	21%	23%
Minnesota	20%	12%	25%	13%	67%	68%	33%	33%
Mississippi	22%	10%	14%	10%	55%	56%	37%	40%
Missouri	21%	8%	20%	12%	58%	60%	31%	33%
Montana	22%	10%	23%	11%	48%	50%	32%	33%
Nebraska	23%	11%	22%	11%	59%	60%	36%	40%
Nevada	24%	8%	18%	10%	42%	42%	61%	65%
New Hampshire	17%	10%	25%	15%	65%	63%	31%	33%
New Jersey	15%	7%	26%	17%	70%	70%	29%	30%
New Mexico	23%	9%	16%	14%	47%	48%	27%	28%
New York	15%	9%	22%	18%	65%	65%	33%	34%
North Carolina	20%	10%	22%	13%	64%	64%	32%	33%
North Dakota	21%	15%	23%	9%	55%	56%	45%	45%
Ohio	19%	9%	19%	12%	57%	58%	38%	38%
Oklahoma	22%	8%	18%	9%	50%	51%	39%	40%
Oregon	24%	9%	22%	14%	65%	66%	28%	28%
Pennsylvania	15%	9%	20%	14%	69%	69%	36%	35%
Rhode Island	19%	8%	23%	15%	72%	72%	23%	32%
South Carolina	20%	10%	19%	12%	59%	59%	21%	23%
South Dakota	21%	12%	20%	9%	52%	54%	65%	61%
Tennessee	20%	8%	19%	9%	56%	57%	41%	40%
Texas	21%	8%	21%	12%	53%	51%	31%	34%
Utah	24%	10%	24%	13%	47%	44%	30%	31%
Vermont	15%	9%	25%	17%	70%	69%	15%	24%
Virginia	18%	8%	23%	19%	68%	69%	33%	34%
Washington	22%	10%	24%	15%	58%	57%	50%	52%
West Virginia	18%	8%	13%	10%	47%	49%	38%	36%
Wisconsin	20%	11%	21%	11%	64%	64%	39%	41%
Wyoming	25%	13%	18%	10%	60%	51%	43%	41%

EXHIBIT 39 Full-time vs. part-time high school graduate postsecondary enrollments in Alaska vs. national average, class of 2019 & 2020.

THE MAJORITY OF STUDENTS IN ALASKA ATTEND PART-TIME, WHEREAS NATIONWIDE THE MAJORITY ATTEND FULL-TIME.

CLASS OF 2019



ALASKA full-time **43%** part-time **57%**



NATIONAL full-time **61%** part-time **39%**

CLASS OF 2020



ALASKA full-time **41%** part-time **59%**



NATIONAL full-time **61%** part-time **39%**

EDUCATION ATTAINMENT RATES

Alaska vs. the highest state, lowest state, & national average for residents in 2020 (Exhibit 41).

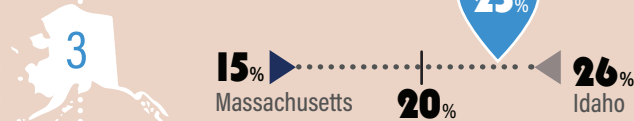
EXHIBIT 41 Education attainment rate comparison, 2020.

ALASKA HOLDS ONE OF THE LARGEST POPULATIONS OF PEOPLE WHO ATTENDED SOME COLLEGE BUT DID NOT COMPLETE A DEGREE PROGRAM.

— National Average ● Alaska ▶ 50th State ◀ 1st State

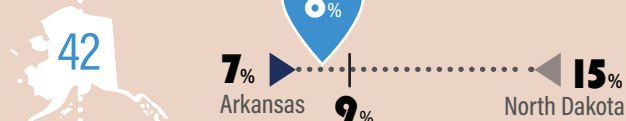
SOME COLLEGE, NO DEGREE

ALASKA RANK



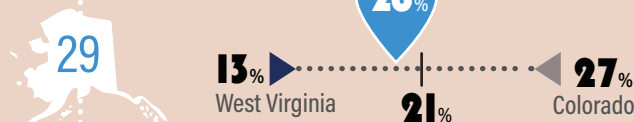
ASSOCIATE DEGREE

ALASKA RANK



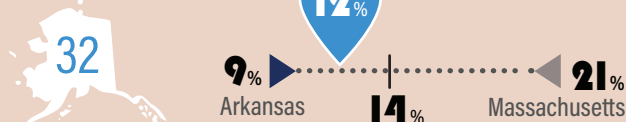
BACHELOR'S DEGREE

ALASKA RANK



GRADUATE | PROFESSIONAL DEGREE

ALASKA RANK



POSTSECONDARY GRADUATION RATES

Alaska's graduation rate at 4-year postsecondary institutions ranked last in the nation (Exhibit 42). The reverse was seen for 2-year Alaska postsecondary institutions, ranking first in the nation (over double the national average) (Exhibit 43).

EXHIBIT 42 Postsecondary graduation rates within 150% of normal time at 4-year postsecondary institutions (6-year IPEDS graduation rates), cohorts 2013 & 2014. There was negligible change between cohorts 2013 & 2014.

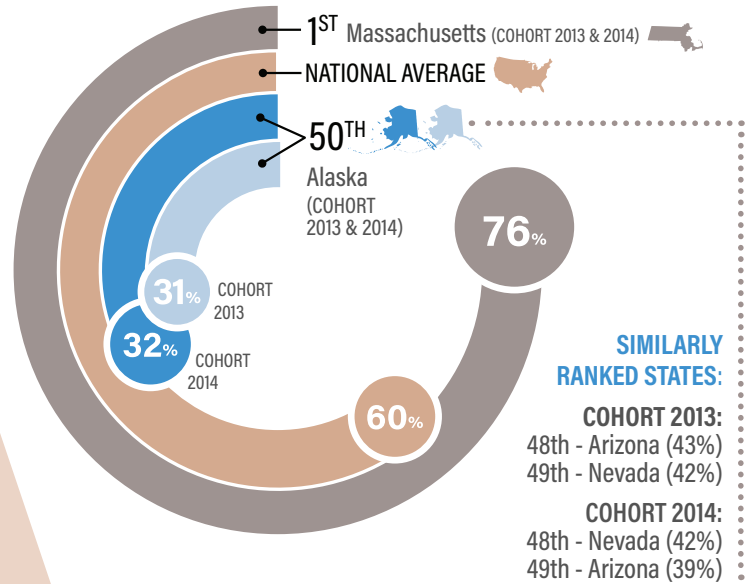


EXHIBIT 43 Postsecondary graduation rate within 150% of normal time at 2-year postsecondary institutions (3-year IPEDS graduation rates), cohorts 2016 & 2017.

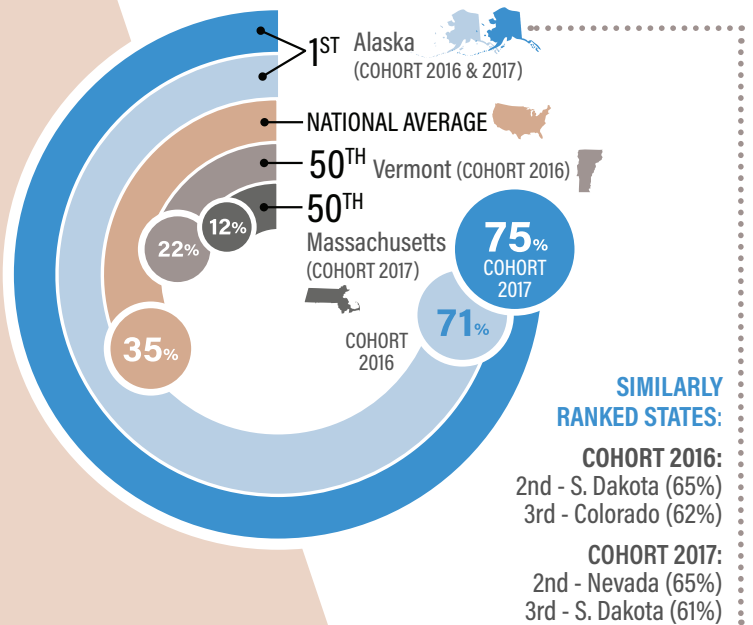


EXHIBIT 44

NATIONAL CONTEXT DATA: TABLE B

	TOTAL FULL-TIME EQUIVALENT (FTE) ENROLLMENT		AVERAGE TUITION & FEES (2019-20)		STUDENT'S COST (FY2020)			STUDENT'S COST (FY2021)		
	FY2020	FY2021	Public 2-Year	Public 4-Year	Appropriations per FTE (\$)	Student Share of Tuition (%)	Average Debt of College Grads (\$)	Appropriations per FTE (\$)	Student Share of Tuition (%)	Average Debt of College Grads (\$)
NATIONAL	10,932,489	10,600,381	\$3,377	\$9,349	\$8,636	44%	NA	\$9,327	42%	NA
Alabama	205,948	194,930	\$4,854	\$10,323	8,023	67%	\$30,966	\$7,733	67%	.
ALASKA	15,051	13,739	NA	\$8,297	\$16,128	23%	\$26,356	\$17,497	23%	\$26,356
Arizona	314,834	292,192	\$2,151	\$11,072	5,480	62%	\$24,298	\$6,194	61%	.
Arkansas	111,155	105,044	\$3,398	\$8,689	8,788	53%	\$27,319	\$8,886	49%	.
California	1,607,937	1,608,718	\$1,270	\$8,192	9,531	23%	\$21,125	\$9,859	20%	.
Colorado	183,702	179,676	\$3,355	\$9,144	5,140	67%	\$26,424	\$5,462	65%	.
Connecticut	81,422	74,538	\$4,516	\$13,886	11,965	50%	\$35,853	\$11,287	48%	.
Delaware	35,571	36,409	NA	\$11,091	5,971	76%	\$39,705	\$6,984	71%	.
Florida	630,884	595,444	\$2,506	\$4,463	7,714	23%	\$24,454	\$8,323	22%	.
Georgia	358,669	356,921	\$3,156	\$7,457	10,348	33%	\$27,759	\$9,844	34%	.
Hawaii	34,736	34,151	\$3,225	\$10,109	14,735	25%	\$24,926	\$13,881	24%	.
Idaho	55,155	53,699	\$3,335	\$7,518	9,910	29%	\$24,983	\$10,612	46%	.
Illinois	312,151	305,508	\$4,035	\$14,455	17,669	32%	\$28,552	\$18,752	30%	.
Indiana	245,224	237,621	\$4,500	\$9,268	6,388	62%	\$28,521	\$6,408	63%	.
Iowa	119,917	118,991	\$5,306	\$9,373	6,608	61%	\$29,560	\$6,115	62%	.
Kansas	129,622	123,169	\$3,542	\$9,088	7,376	49%	\$26,002	\$8,680	46%	.
Kentucky	141,103	137,574	\$4,395	\$10,888	7,535	55%	\$28,356	\$7,931	55%	.
Louisiana	165,480	163,735	\$4,166	\$9,571	6,143	47%	\$26,284	\$6,209	47%	.
Maine	34,005	32,862	\$3,778	\$10,103	8,102	47%	\$32,764	\$8,724	45%	.
Maryland	221,419	213,324	\$4,330	\$9,714	8,800	47%	\$30,461	\$9,050	46%	.
Massachusetts	156,878	145,913	\$5,336	\$13,729	8,728	40%	\$33,457	\$9,611	37%	.
Michigan	357,275	343,596	\$3,703	\$13,315	7,630	67%	\$29,863	\$8,197	65%	.
Minnesota	180,441	171,312	\$5,566	\$11,748	8,055	55%	\$32,012	\$11,759	46%	.
Mississippi	127,142	121,550	\$3,432	\$8,604	7,166	54%	\$29,714	\$8,161	49%	.
Missouri	163,408	156,493	\$3,545	\$8,992	8,819	47%	\$28,713	\$9,504	44%	.
Montana	35,237	33,459	\$3,871	\$6,967	6,757	53%	\$27,114	\$7,646	48%	.
Nebraska	73,833	72,564	\$3,103	\$8,582	10,485	41%	\$26,781	\$11,113	39%	.
Nevada	72,145	75,873	NA	\$6,023	9,430	24%	\$21,357	\$6,490	28%	.
New Hampshire	34,695	32,348	\$7,130	\$16,679	4,321	71%	\$29,928	\$4,370	68%	.
New Jersey	261,616	252,098	\$4,779	\$14,360	7,735	49%	\$35,117	\$7,753	49%	.
New Mexico	71,365	65,855	\$1,724	\$7,152	14,268	22%	\$20,868	\$15,134	20%	.
New York	524,387	494,065	\$5,476	\$8,467	12,252	34%	\$30,951	\$12,428	32%	.
North Carolina	403,093	392,374	\$2,494	\$7,228	10,742	32%	\$29,681	\$11,090	31%	.
North Dakota	32,660	31,900	\$5,073	\$8,628	8,874	52%	\$31,939	\$9,133	54%	.
Ohio	385,027	374,222	\$4,330	\$9,902	6,432	60%	\$30,605	\$7,567	56%	.
Oklahoma	126,370	123,954	\$4,150	\$8,009	6,393	58%	\$27,876	\$5,838	58%	.
Oregon	137,801	129,767	\$4,881	\$10,813	6,977	53%	\$26,504	\$7,395	54%	.
Pennsylvania	322,144	309,837	\$5,348	\$15,565	5,412	66%	\$39,375	\$6,097	64%	.
Rhode Island	30,099	31,426	\$4,700	\$13,105	6,878	59%	\$36,791	\$6,137	60%	.
South Carolina	168,422	164,276	\$4,916	\$12,497	6,586	65%	\$32,635	\$7,624	60%	.
South Dakota	31,962	31,957	\$6,469	\$8,978	7,704	55%	\$32,029	\$7,665	56%	.
Tennessee	186,845	178,618	\$4,379	\$10,164	10,969	39%	\$26,852	\$11,412	39%	.
Texas	1,071,308	1,044,747	\$2,380	\$8,598	8,147	40%	\$26,273	\$9,039	38%	.
Utah	127,833	129,310	\$3,929	\$6,700	8,399	44%	\$18,344	\$8,717	41%	.
Vermont	20,562	19,509	\$6,654	\$17,083	3,387	85%	\$34,866	\$7,370	70%	.
Virginia	301,730	298,964	\$5,237	\$13,655	6,519	57%	\$29,616	\$7,215	55%	.
Washington	230,583	214,902	\$4,468	\$7,168	8,610	41%	\$23,993	\$10,296	35%	.
West Virginia	65,445	62,038	\$4,344	\$8,195	5,905	60%	\$29,208	\$6,309	57%	.
Wisconsin	206,545	198,362	\$4,476	\$8,764	8,276	46%	\$30,270	\$9,107	44%	.
Wyoming	21,653	20,947	\$4,136	\$4,747	21,802	15%	\$23,510	\$26,393	11%	.

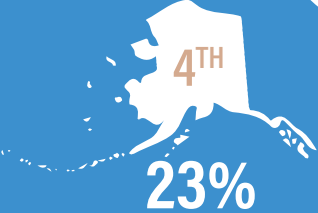
ALASKA VS. NATIONAL METRICS (OTHER)

ALASKA'S NATIONAL STANDING COMPARED TO THE HIGHEST ▲, LOWEST ▼, & SIMILARLY RANKED STATES

Exhibit 45

STUDENT'S SHARE OF COST
· NET TUITION AS
% OF REVENUES ·

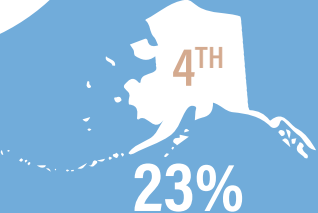
(2019-20)



SIMILAR RANKED STATES:
California | Florida

Wyoming	15%	▲ #1
Vermont	85%	▼ #50

(2020-21)



SIMILAR RANKED STATES:
Florida | Hawaii

Wyoming	11%	▲ #1
Delaware	71%	▼ #50

Exhibit 46

APPROPRIATIONS
PER FTE STUDENT

(2019-20)



SIMILAR RANKED STATES:
Illinois | Hawaii

Wyoming	\$21,800	▲ #1
Vermont	\$3,390	▼ #50

(2020-21)



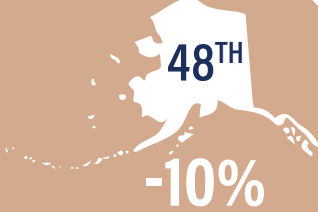
SIMILAR RANKED STATES:
Illinois | New Mexico

Wyoming	\$26,390	▲ #1
New Hampshire	\$4,370	▼ #50

Exhibit 47

PERCENT CHANGE IN
FTE ENROLLMENT

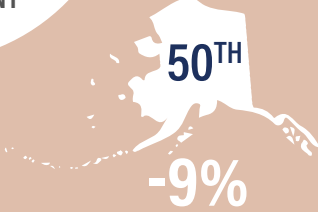
(1-Year, 2019-20)



SIMILAR RANKED STATES:
New Hampshire | Missouri

Arizona	+8%	▲ #1
New Mexico	-11%	▼ #50

(1-Year, 2020-21)



SIMILAR RANKED STATES:
Arizona | Connecticut

Delaware	+2%	▲ #1
Alaska	-9%	▼ #50

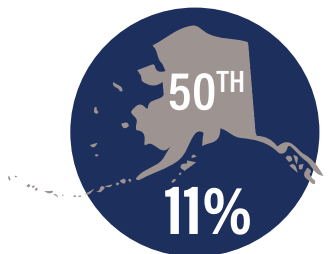
LOW-INCOME COLLEGE PARTICIPATION

Alaska's low-income college participation (Exhibit 48) continues to be the lowest in the nation, ranking 10% below the 48th (23%) & 49th (21%) ranked states in 2018 & 2020:

Exhibit 48

LOW-INCOME COLLEGE PARTICIPATION

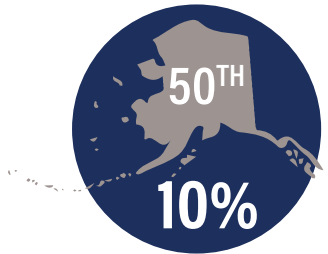
· 2018 ·



SIMILAR RANKED STATES:
Oklahoma | New Mexico

New Jersey	53%	▲ #1
------------	-----	------

· 2020 ·



SIMILAR RANKED STATES:
Oklahoma | Wyoming

New Jersey	47%	▲ #1
------------	-----	------

POVERTY RATES

Alaska's poverty rates by education attainment are similar to national averages, with Alaska holding a slightly higher proportion of residents with less than high school education and students with some college or associate degree (Exhibit 49).

EXHIBIT 49 Alaska vs. national poverty rates by education attainment (2019).

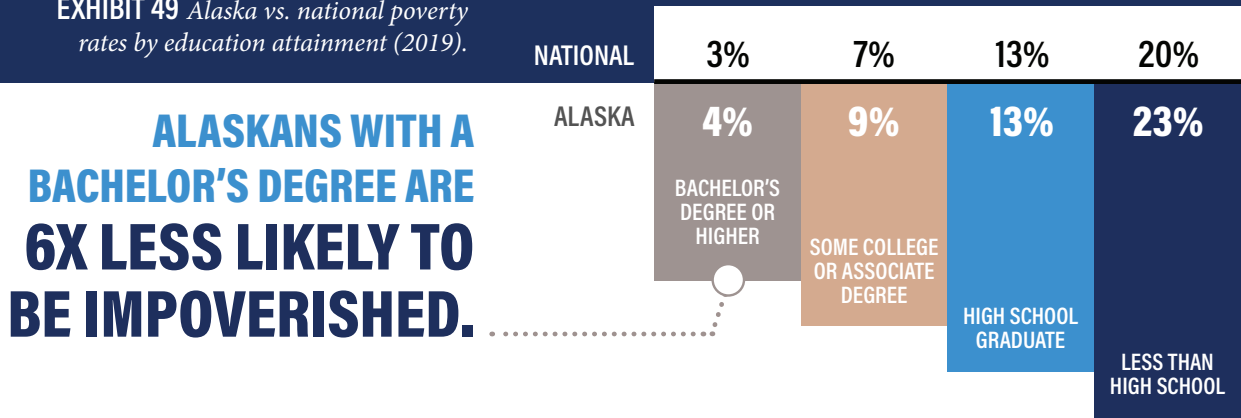
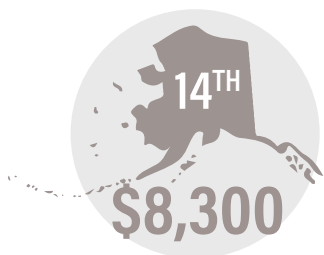


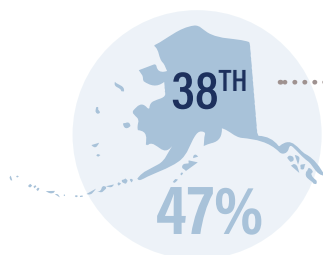
Exhibit 50
AVERAGE TUITION & FEES
(Public 4-Year, 2019-20)



SIMILAR RANKED STATES:
West Virginia | New York

Florida \$4,460 ▲ #1
Vermont \$17,080 ▼ #50

Exhibit 51
PERCENT OF COLLEGE GRADUATES WITH DEBT
(Class of 2020)



SIMILAR RANKED STATES:
Colorado | Louisiana

New Hampshire 70% ▲ #1
Utah 39% ▼ #50

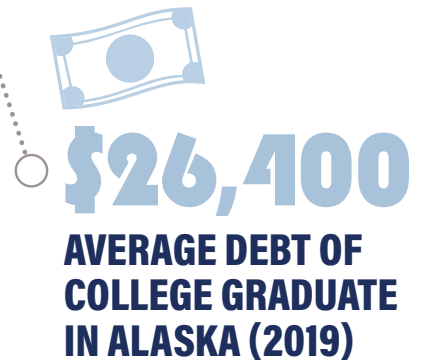
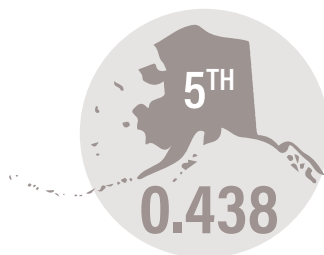


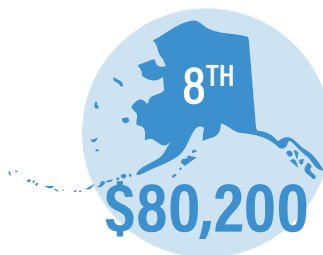
Exhibit 52
INCOME INEQUALITY, GINI INDEX 2019
The Gini coefficient ranges from 0-1 (perfect equality - perfect inequality)



SIMILAR RANKED STATES:
South Dakota | Wisconsin

Utah 0.427 ▲ #1
New York 0.515 ▼ #50

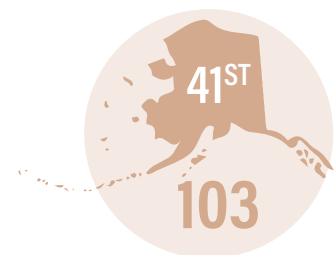
Exhibit 53
MEDIAN HOUSEHOLD INCOME
(ACS 2020 Experimental Data)



SIMILAR RANKED STATES:
Washington | Connecticut

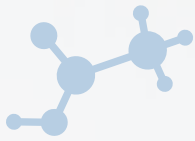
Maryland \$88,740 ▲ #1
Mississippi \$47,250 ▼ #50

Exhibit 54
COST OF LIVING
(2020 Regional Price Parties, US = 100)



SIMILAR RANKED STATES:
Colorado | Connecticut

Mississippi 88 ▲ #1
Hawaii 112 ▼ #50



SECTION 4 | PG. 28-33

FINANCIAL AID



FEDERAL PROGRAMS

PELL GRANT

Primarily designed to support undergraduate students, the federal Pell Grant program awards aid to students with exceptional financial need. Award amounts change yearly and are determined based on need, cost of attendance, and enrollment type; for the 2019-2020 award year, the maximum Pell Grant award was \$6,195.

WORK-STUDY JOBS

The federal work-study program provides part-time work for undergraduate and graduate students with financial need during their time enrolled in school.

SUBSIDIZED & UNSUBSIDIZED LOANS

These federal loan programs support students at colleges, universities, community colleges, and career or technical schools. Subsidized loans are for undergraduate students with financial need, and unsubsidized loans are for either undergraduates or graduate students and do not require the student to demonstrate financial need.

PLUS LOANS

The PLUS loan program supports eligible parents and graduate or professional students to cover costs at participating postsecondary institutions.

STATE PROGRAMS

ALASKA PERFORMANCE SCHOLARSHIP

The Alaska Performance Scholarship (APS) provides an opportunity for Alaska high school graduates to earn up to \$4,755 per year towards their postsecondary education costs. Alaska residents graduating from an Alaska high school earn the scholarship by taking rigorous curriculum, getting good grades, and scoring well on qualifying college placement or work-ready exams. Recipients can use the scholarship at eligible Alaska institutions for up to four years of study.

ALASKA EDUCATION GRANT

The Alaska Education Grant (AEG) provides needs-based financial assistance to Alaska students attending qualifying postsecondary educational institutions in Alaska. Grant awards range from \$500 to \$4,000 per academic year. Awards are prioritized based on financial need, continuing full-time enrollment, and application date for the Free Application for Federal Student Aid (FAFSA).

ALASKA SUPPLEMENTAL EDUCATION LOAN

The Alaska Supplemental Education Loan (ASEL) provides low-cost loans to Alaska college or career training students. Students must be enrolled at least half-time to defer payments on the Alaska Supplemental Education Loan.

FAMILY EDUCATION LOAN

The Family Education Loan (FEL) is a low-cost state loan option for family members supporting a student's postsecondary education. Parents, spouses, and grandparents can take out a loan on behalf of the student.

ALASKA REFINANCE LOAN

The Alaska Refinance Loan (REFI) is a state loan option for Alaska residents to reduce costs for repaying their student loan debt from any lender, including federal and private loans.

UA SCHOLARS

The UA Scholars award is a \$12,000 scholarship provided to the top ten percent of all graduating seniors from Alaska high schools and can be used at any of the University of Alaska (UA) campuses. It provides an incentive for Alaska's middle and high school students to achieve academic excellence, and it is designed to nourish efforts of schools to provide high quality education and encourage top Alaska high school graduates to attend UA. The UA Scholars Program is administered by the University of Alaska and is funded through its Land Grant Endowment.



UNIVERSITY
of ALASKA
Many Traditions One Alaska

DISBURSEMENT SUMMARY

FY2020 had a total of \$165.5 million in Federal and state financial aid disbursed in Alaska (Exhibit 55).

EXHIBIT 55 Aid disbursed in Alaska FY20, including the amount disbursed by each financial aid program (millions) and the proportion (%) the disbursed amount represents relative to other reported programs.

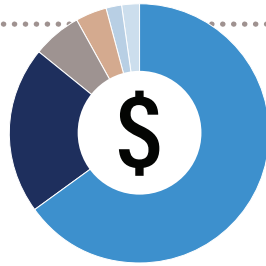
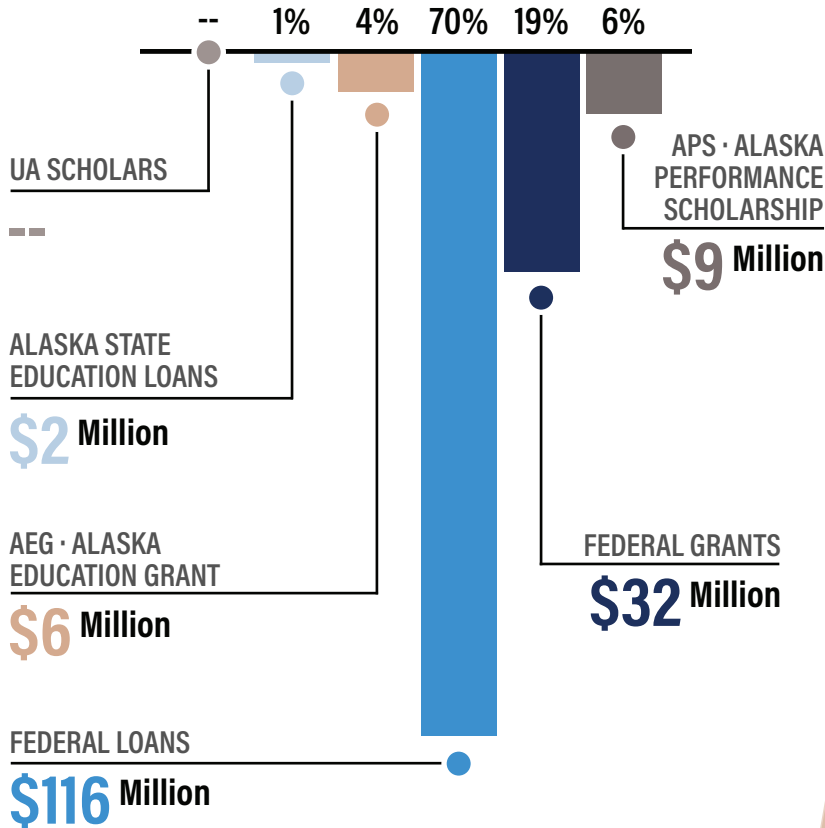


Exhibit 56

CARES ACT FUNDS

Grants issued to the Department of Education Stabilization Fund (ESF) include: Coronavirus Aid, Relief, and Economic Security (CARES), Coronavirus Response and Relief Supplemental Appropriations (CRRSA) and American Rescue Plan (ARP) acts (as reported through January 31, 2022)

Education relief funding greatly increased from previously reported totals in the 2021 Almanac edition:

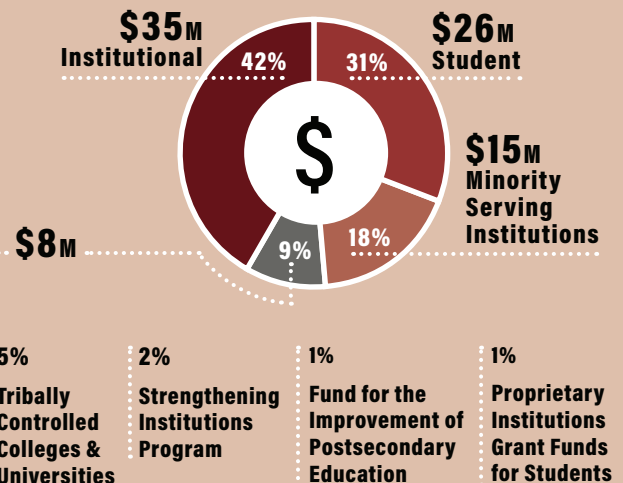
ALASKA ESF TOTAL: \$649 MILLION

HEERF PORTION (13% OF ESF): \$83 MILLION

Additional education grants issued:

- \$557 MILLION** Elementary & Secondary School Emergency Relief (ESSER) Fund
- \$9 MILLION** Governor's Emergency Education Relief (GEER) Fund
- \$11 MILLION** Emergency Assistance for Non-Public Schools

HIGHER EDUCATION EMERGENCY RELIEF FUND (HEERF) BY PROGRAM, 2022 (Millions & Portions of total funds)



FEDERAL FINANCIAL AID ACCOUNTS FOR OVER 80% OF THE TOTAL AID AVAILABLE TO STUDENTS.

\$142 MILLION

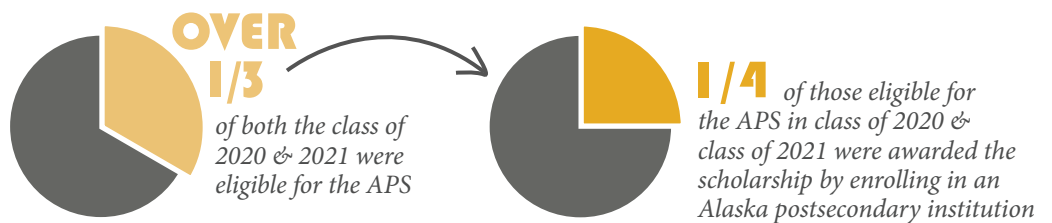
SOURCE: U.S. DEPT OF EDUCATION, EDUCATION RELIEF FUND (ERF)

STUDENT OUTCOMES APS & AEG HIGHLIGHTS



ALASKA PERFORMANCE SCHOLARSHIP (APS) HIGHLIGHTS

The APS promotes high school achievement, allows greater access to postsecondary education, & helps retain students in Alaska.



APS PROGRAM OVERVIEW

To be eligible for the APS, scholarship, students must:

- Obtain a grade point average of 2.5 or greater
- Complete the required high school curriculum
- Meet required testing scores: SAT (at least 1060), ACT (21), WorkKeys (13)*

* NOTE: The standardized testing requirement was waived for class of 2020 & 2021

\$89 million
HAS BEEN AWARDED SINCE 2011 TO OVER **11,000**
HIGH ACHIEVING STUDENTS.

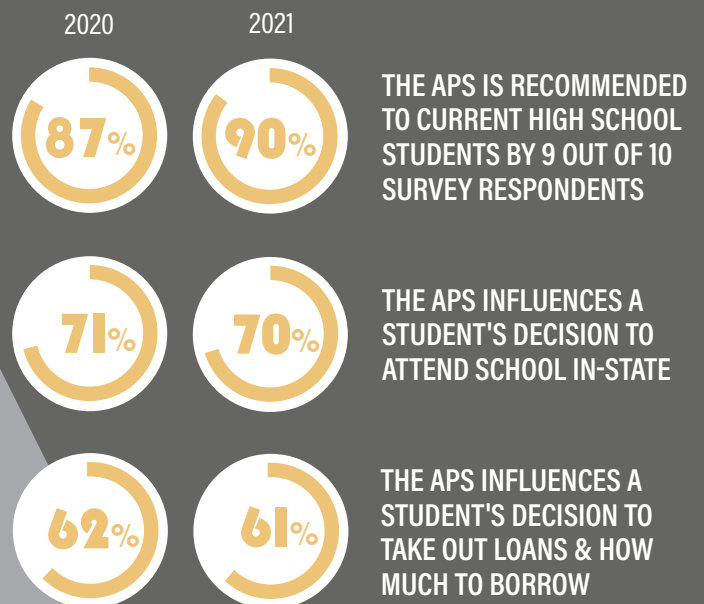
EXHIBIT 57

AWARD YEAR BREAKDOWN FALL 2020



EXHIBIT 58

FORMER APS RECIPIENTS STUDENT SURVEY



THE PANDEMIC'S IMPACT ON APS-ELIGIBLE STUDENTS



APS-eligible 2020 & 2021 graduates reported making postsecondary education decisions that were influenced by the COVID-19 pandemic:

EXHIBIT 59 POSTSECONDARY OUTCOMES OF APS RECIPIENTS

APS RECIPIENTS ARE MORE PREPARED FOR CONTINUING EDUCATION

Other first-time freshmen are **4 times** more likely to require developmental coursework than APS recipients

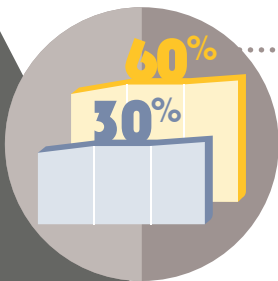
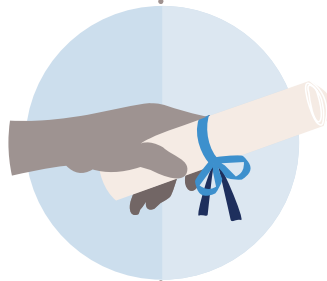


APS RECIPIENTS HAVE HIGHER RETENTION RATES

1.5 times more likely for APS recipients to persist into their 2nd year compared to other first-time freshmen

APS RECIPIENTS PURSUE BACHELOR'S DEGREE PROGRAMS AT HIGHER RATES

1.5 times more likely for APS recipients to pursue a Bachelor's degree program than other first-time freshmen

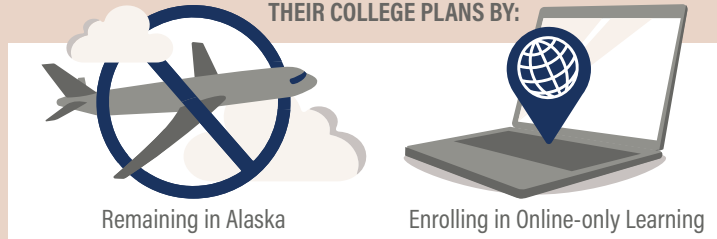


APS RECIPIENTS HAVE HIGHER COMPLETION RATES

2 times more likely for APS recipients to graduate from a bachelor's degree program than other first-time freshmen

30% OF APS-ELIGIBLE 2020 & 2021 GRADUATES REPORTED THAT THE PANDEMIC AFFECTED THEIR DECISION TO ENROLL AT AN ALASKA POSTSECONDARY INSTITUTION

STUDENTS PRIMARILY ALTERED
THEIR COLLEGE PLANS BY:



7 IN 10 STUDENTS



Viewed the APS as a key resource for offsetting personal financial impacts from COVID-19

CONSEQUENCE OF THE SUSPENSION OF STANDARDIZED TESTING REQUIREMENT:

14% INCREASE IN ELIGIBILITY

A consequence of suspending the standardized testing requirement was greater accessibility to the APS for class of 2020 & 2021.

Despite this, higher eligibility did not equate to higher use of the scholarship. APS use declined for class of 2020 & 2021.

SOURCE: APS OUTCOMES
REPORT, 2020 & 2021

LONG-TERM RETENTION OF APS RECIPIENTS TO ALASKA

EXHIBIT 61 ALASKA RESIDENCY

APS recipients have higher Alaska residency rates than APS ineligible students, most notably 2-7 years after graduation (BELOW: APS recipient vs. ineligible student residency rates)

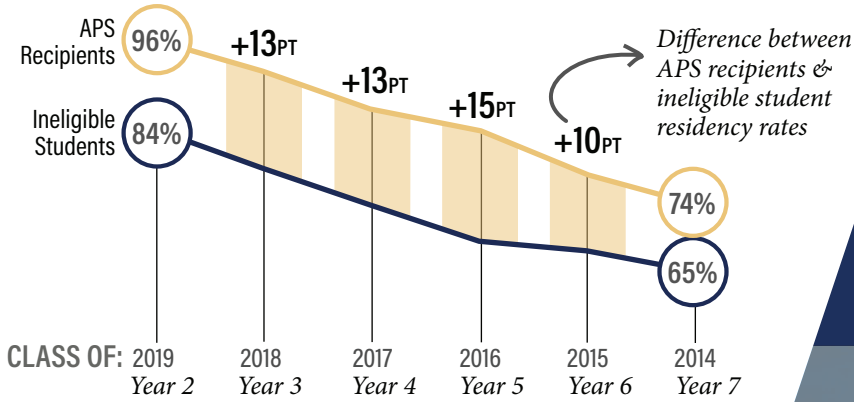
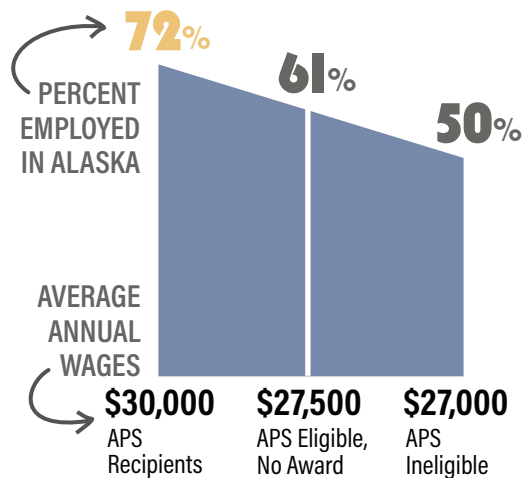


EXHIBIT 62 ALASKA EMPLOYMENT

A higher proportion of APS Recipients are employed in Alaska and concurrently earn \$2,000-3,000 more annually than APS Eligible, No Award & APS Ineligible students (BELOW: Percent employment in Alaska & average annual wages)



ALASKA EDUCATION GRANT (AEG) HIGHLIGHTS

Students are selected for Alaska Education Grants (AEG) based on financial need, determined by income information from the Free Application for Federal Student Aid (FAFSA).

\$56 MILLION HAS BEEN AWARDED SINCE 2006 TO NEARLY **23,000** STUDENTS WITH FINANCIAL NEED.

More students continue to be eligible for the AEG than the amount of grant funding available. Below is the selection criteria used to prioritize award disbursements to students with the highest financial need. This criteria also identifies actions eligible students can take to increase likelihood of receiving an award:

- 1 STUDENT'S FINANCIAL NEED, FROM THE STUDENT'S EXPECTED FAMILY CONTRIBUTION (EFC) ESTIMATE CALCULATED FROM THE FAFSA
- 2 STATUS AS AEG RECIPIENT IN THE PREVIOUS ACADEMIC YEAR
- 3 STUDENT'S ENROLLMENT INTENSITY THAT TERM, WITH FULL-TIME STUDENTS PRIORITIZED OVER PART-TIME STUDENTS
- 4 FAFSA FILING DATE, BEGINNING WITH THE EARLIEST DATE.

EXHIBIT 63

2021 AEG AWARD YEAR BREAKDOWN



2,690

TOTAL NUMBER OF AEG RECIPIENTS



28

AVG AGE



40%

1ST GENERATION



\$2,170

AVG AWARD AMOUNT



6%

ALASKA NATIVE

EXHIBIT 64

FORMER AEG RECIPIENTS



OVER HALF

of former AEG recipients said the grant influenced the number of hours needed to work while attending school.



3 OUT OF 5

former AEG recipients said the grant had a role in their ability to graduate for those who reported they had graduated with a credential.

EXHIBIT 65

AEG RECIPIENTS AT UNIVERSITY OF ALASKA (UA)



\$3,355

Average total aid received by AEG recipients attending UA (grants, loans, scholarships, & other aid types).



18%

Proportion of all degrees, certificates, & endorsements awarded to Alaska Native/American Indian AEG recipients.



13%

Proportion of awards that went to Alaska Native/American Indian students at UA relative to the student body overall.

UNIVERSITY OF ALASKA FAIRBANKS

- 1 Non-Degree Seeking
- 2 Elementary Education
- 3 General Program

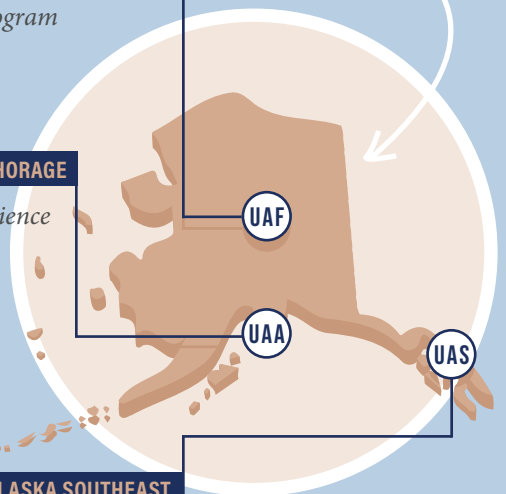
TOP MAJORS OF AEG RECIPIENTS ATTENDING UA

UNIVERSITY OF ALASKA ANCHORAGE

- 1 Pre-Major Nursing Science
- 2 General Program
- 3 Accounting

UNIVERSITY OF ALASKA SOUTHEAST

- 1 Business Administration
- 2 Elementary Education
- 3 Non-Degree Seeking



ALASKA



POSTSECONDARY INSTITUTIONS

LEARN MORE (SCHOOL WEBSITE)

AWARDS OFFERED

CAMPUS LOCATION(S)

EXHIBIT 66 SCHOOL PROFILES

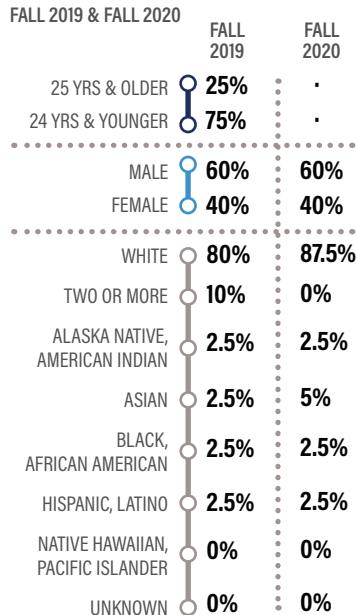
ALASKA BIBLE COLLEGE

AKBIBLE.EDU

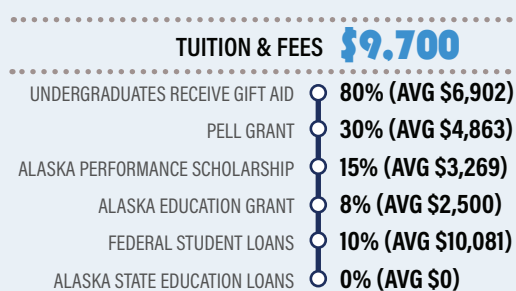
CERTIFICATES, ASSOCIATE, BACHELOR'S

PALMER

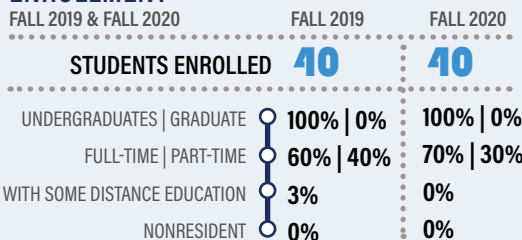
DEMOGRAPHIC BREAKDOWN



COST & FINANCIAL AID 2019-20



ENROLLMENT

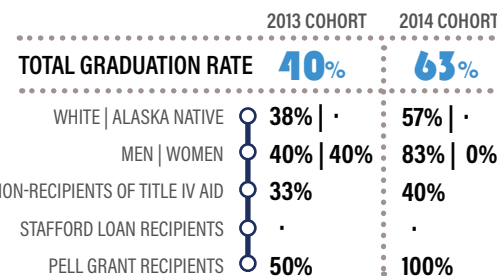


1ST-TO-2ND YEAR RETENTION RATES



GRADUATION RATES 2013 & 2014 COHORTS

Within 150% of Normal Time, First-Time, Full-Time, Degree/Certificate-Seeking Undergraduates



TOTAL AWARDS AY2020



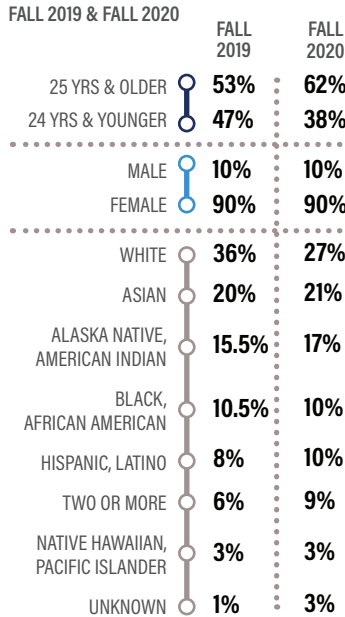
TOP PROGRAMS
BACHELOR'S AWARDED
AY2020

Theology and
Religious Degree — 6

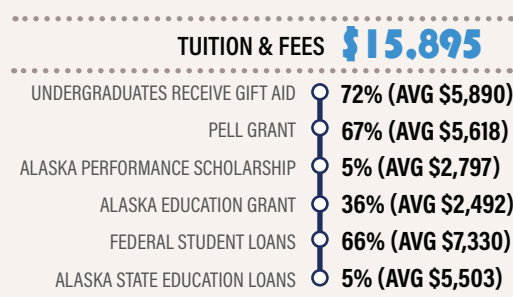
2 ALASKA CAREER COLLEGE

ALASKACAREERCOLLEGE.EDU
 CERTIFICATES, ASSOCIATE
 ANCHORAGE

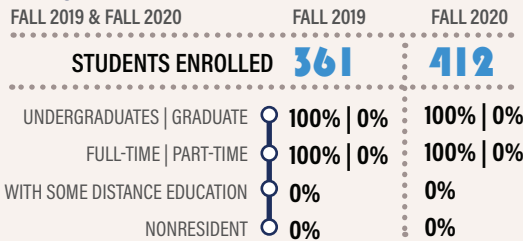
DEMOGRAPHIC BREAKDOWN



COST & FINANCIAL AID 2019-20



ENROLLMENT

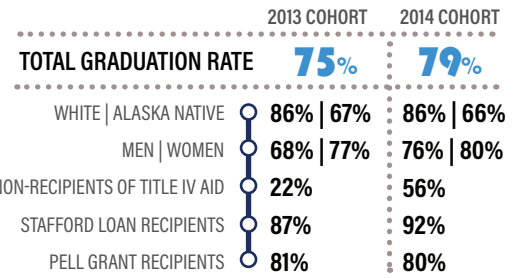


1ST-TO-2ND YEAR RETENTION RATES

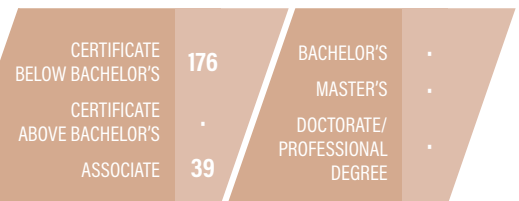


GRADUATION RATES 2013 & 2014 COHORTS

Within 150% of Normal Time, First-Time, Full-Time, Degree/Certificate-Seeking Undergraduates



TOTAL AWARDS AY2020



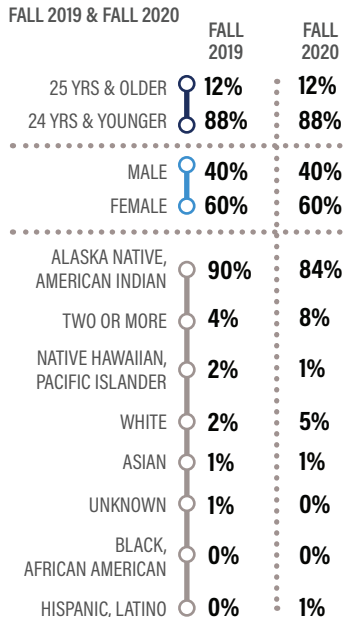
TOP PROGRAMS ASSOCIATE AWARDED AY2020

Business, Management, Marketing & Related Services — 39

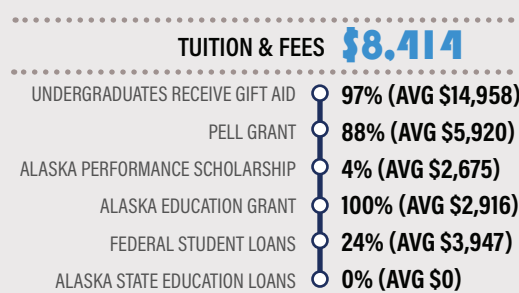
3 ALASKA CHRISTIAN COLLEGE

ALASKACC.EDU
 CERTIFICATES, ASSOCIATE
 SOLDOTNA

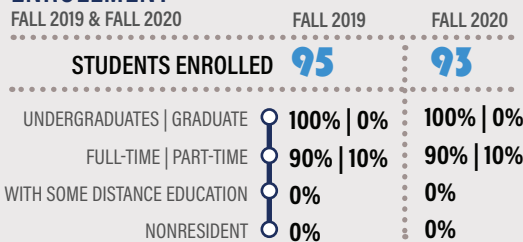
DEMOGRAPHIC BREAKDOWN



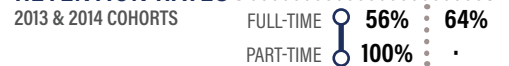
COST & FINANCIAL AID 2019-20



ENROLLMENT

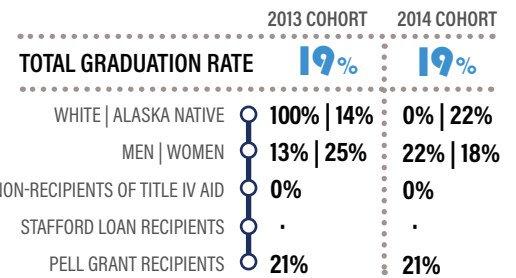


1ST-TO-2ND YEAR RETENTION RATES



GRADUATION RATES 2013 & 2014 COHORTS

Within 150% of Normal Time, First-Time, Full-Time, Degree/Certificate-Seeking Undergraduates



TOTAL AWARDS AY2020



TOP PROGRAMS ASSOCIATE AWARDED AY2020

Liberal Arts & Sciences, General Studies, & Humanities — 6

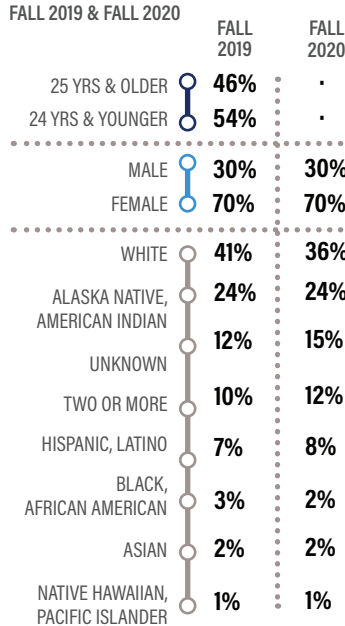
2 Construction Trades — 4

3 (a) Health Professions & Related Programs — 2
 (b) Education — 2

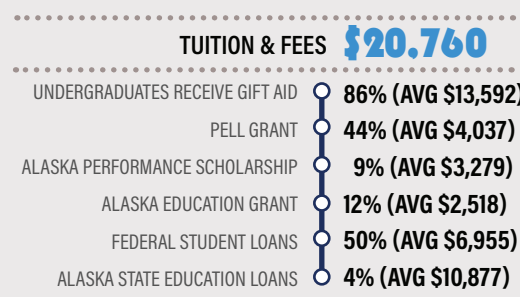
1 ALASKA PACIFIC UNIVERSITY

ALASKAPACIFIC.EDU
 CERTIFICATES, ASSOCIATE, BACHELOR'S, GRADUATE
 ANCHORAGE

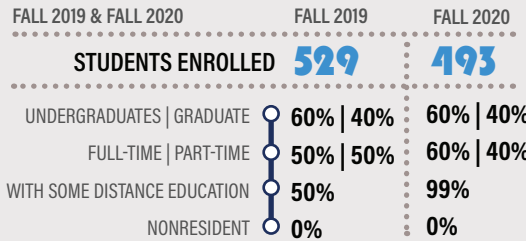
DEMOGRAPHIC BREAKDOWN



COST & FINANCIAL AID 2019-20



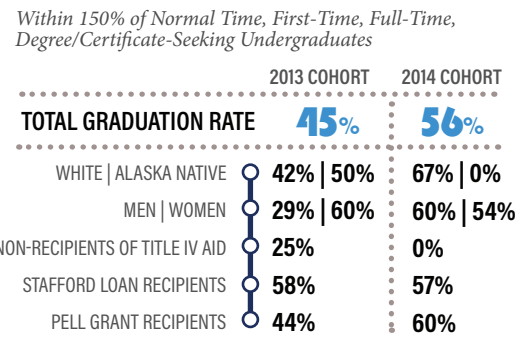
ENROLLMENT



1ST-TO-2ND YEAR RETENTION RATES



GRADUATION RATES 2013 & 2014 COHORTS



TOTAL AWARDS AY2020



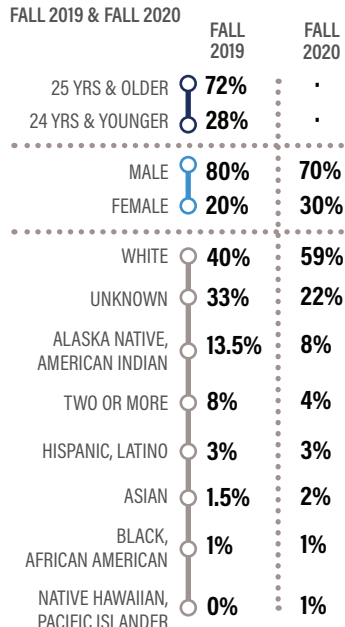
TOP PROGRAMS BACHELOR'S AWARDED AY2020

- 1 Business, Management, Marketing & Related Services — 17
- 2 Psychology — 11
- 3 Multi/Interdisciplinary Studies — 10

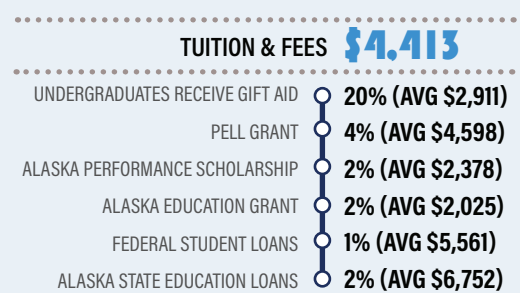
5 ALASKA VOCATIONAL TECHNICAL CENTER (AVTEC)

AVTEC.EDU
 CERTIFICATES
 SEWARD

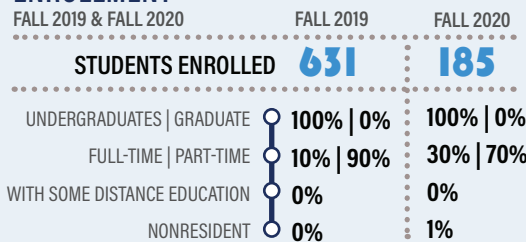
DEMOGRAPHIC BREAKDOWN



COST & FINANCIAL AID 2019-20



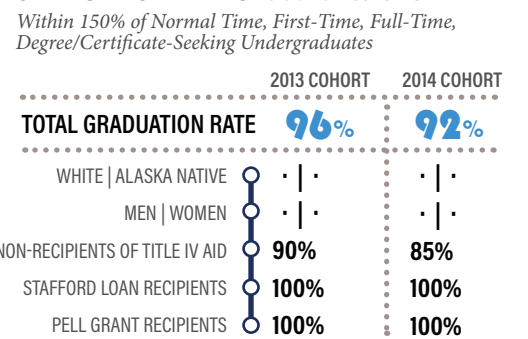
ENROLLMENT



1ST-TO-2ND YEAR RETENTION RATES



GRADUATION RATES 2013 & 2014 COHORTS



TOTAL AWARDS AY2020

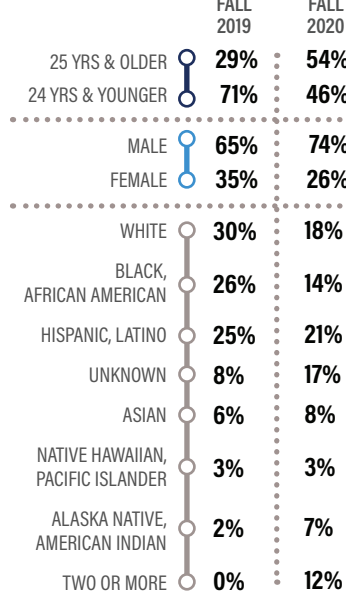


TOP PROGRAMS CERTIFICATE AWARDED AY2020

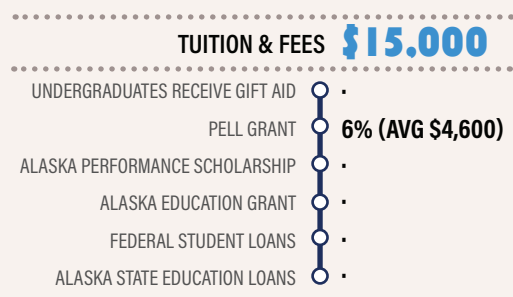
- 1 Mechanic & Repair Technologies/Technicians — 37
- 2 Precision Production — 19
- 3 Engineering/Engineering-related Technologies/Technicians — 18

DEMOGRAPHIC BREAKDOWN

FALL 2019 & FALL 2020

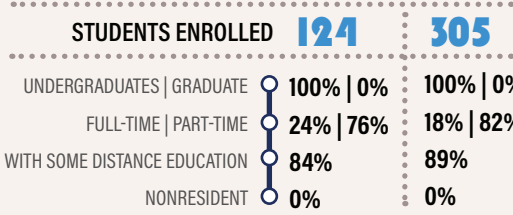


COST & FINANCIAL AID 2019-20



ENROLLMENT

FALL 2019 & FALL 2020

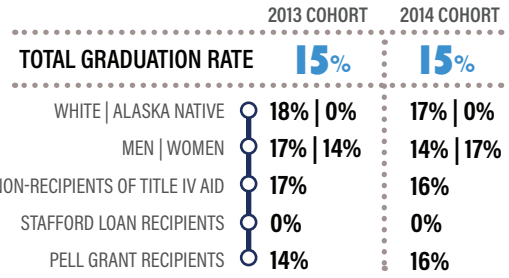


1ST-TO-2ND YEAR RETENTION RATES



GRADUATION RATES 2013 & 2014 COHORTS

Within 150% of Normal Time, First-Time, Full-Time, Degree/Certificate-Seeking Undergraduates



TOTAL AWARDS AY2020



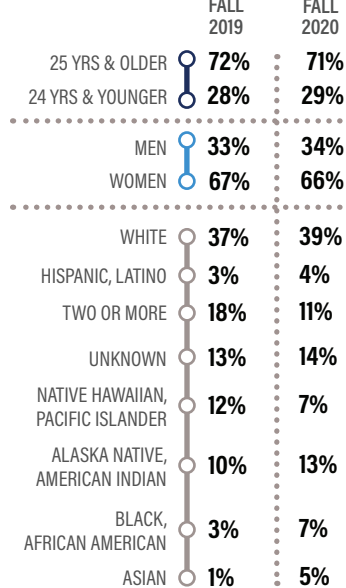
TOP PROGRAMS ASSOCIATE AWARDED AY2020

- General Studies —
- Business Management —
- Criminal Justice —

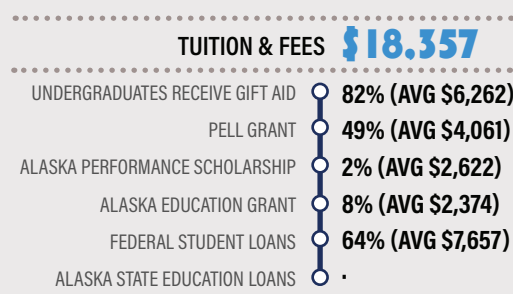
7 CHARTER COLLEGE: ALASKA

DEMOGRAPHIC BREAKDOWN

FALL 2019 & FALL 2020

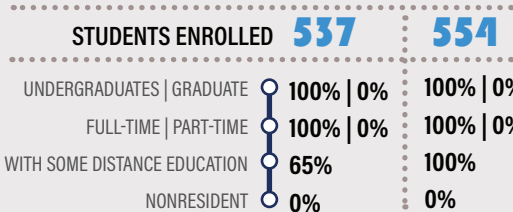


COST & FINANCIAL AID 2019-20



ENROLLMENT

FALL 2019 & FALL 2020

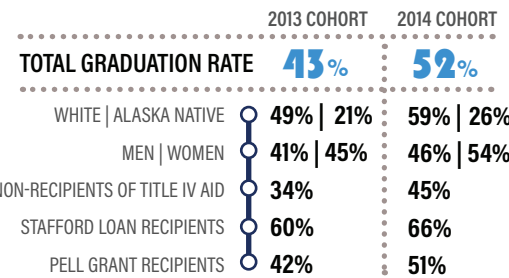


1ST-TO-2ND YEAR RETENTION RATES



GRADUATION RATES 2013 & 2014 COHORTS

Within 150% of Normal Time, First-Time, Full-Time, Degree/Certificate-Seeking Undergraduates



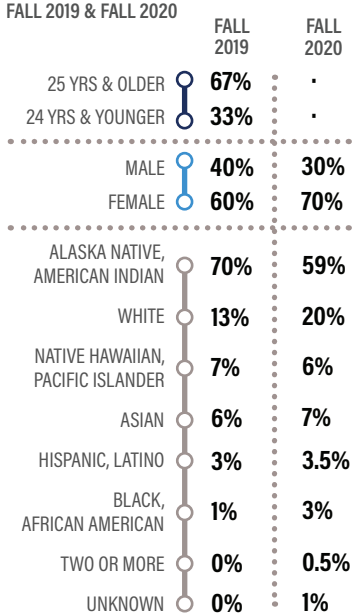
TOTAL AWARDS AY2020



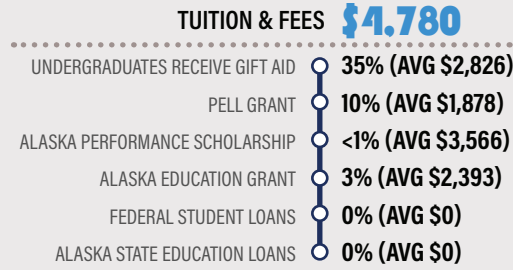
TOP PROGRAMS ASSOCIATE AWARDED AY2020

- Associate of Applied Nursing — 66
- Certificate in Medical Assistant — 48
- Certificate in Heating, Ventilation, Air Conditioning & Refrigeration — 23

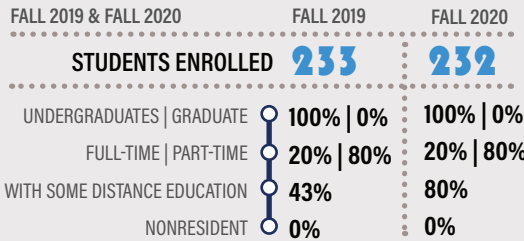
DEMOGRAPHIC BREAKDOWN



COST & FINANCIAL AID 2019-20



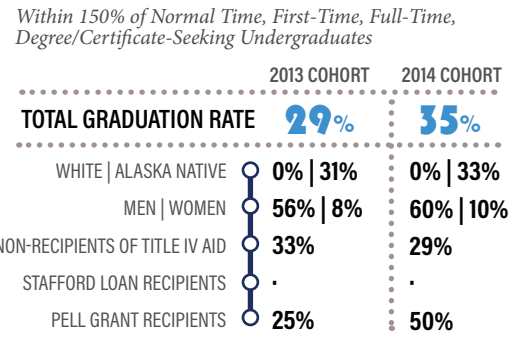
ENROLLMENT



1ST-TO-2ND YEAR RETENTION RATES



GRADUATION RATES 2013 & 2014 COHORTS



TOTAL AWARDS AY2020

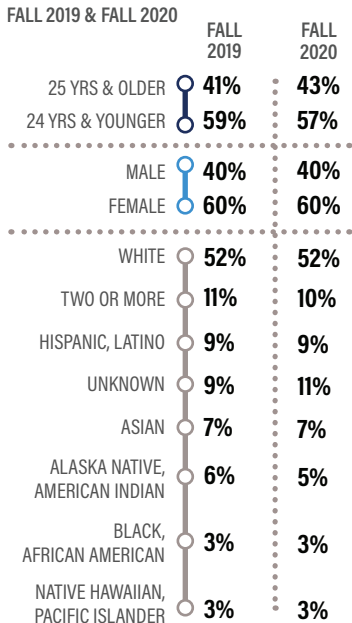


TOP PROGRAMS ASSOCIATE AWARDED AY2020

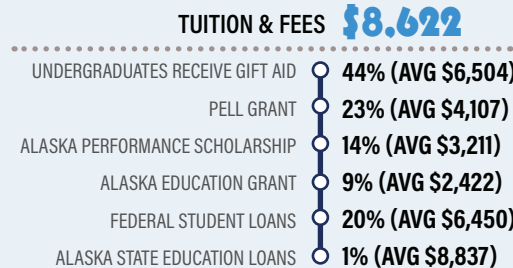
- 1 Business, Management, Marketing & Related Services — 7
- 2 (a) Construction Trades — 2
(b) Liberal Arts & Sciences, General Studies & Humanities — 2

9 UNIVERSITY OF ALASKA ANCHORAGE

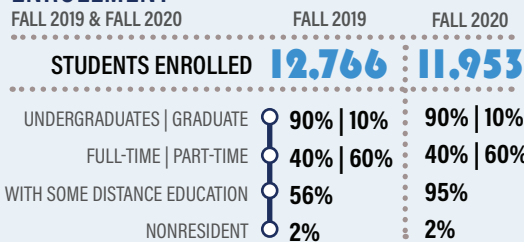
DEMOGRAPHIC BREAKDOWN



COST & FINANCIAL AID 2019-20



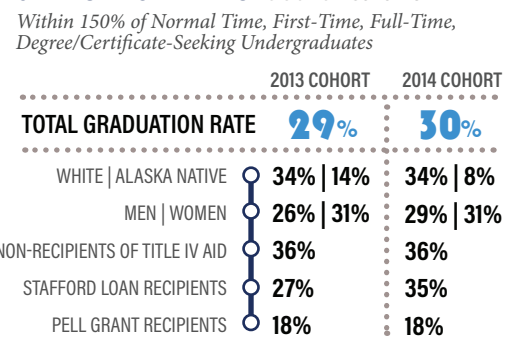
ENROLLMENT



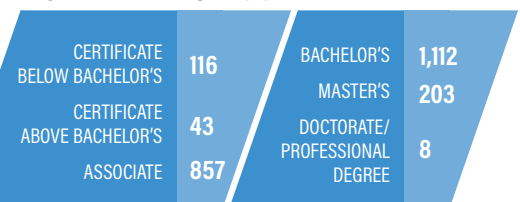
1ST-TO-2ND YEAR RETENTION RATES



GRADUATION RATES 2013 & 2014 COHORTS



TOTAL AWARDS AY2020



TOP PROGRAMS BACHELOR'S AWARDED AY2020

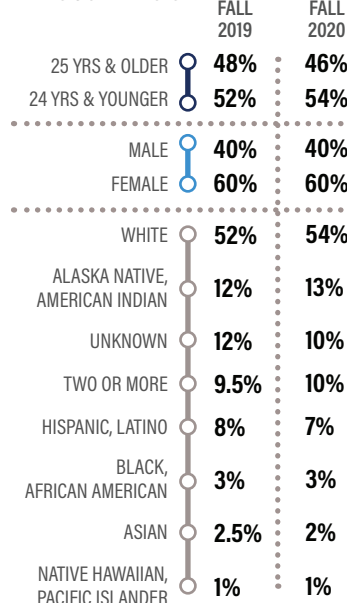
- 1 Health Professions & Related Programs — 262
- 2 Business, Management, Marketing & Related Services — 208
- 3 Engineering — 102

10 UNIVERSITY OF ALASKA FAIRBANKS

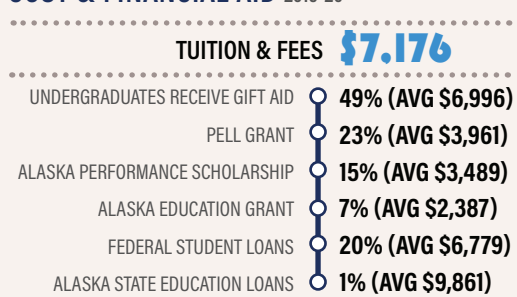
UAF.EDU
 CERTIFICATES, ASSOCIATE, BACHELOR'S, GRADUATE
 FAIRBANKS · DILLINGHAM · KING SALMON · TOGIAK
 NEW STUYAHOK · KOTZEBUE · BETHEL · NOME

DEMOGRAPHIC BREAKDOWN

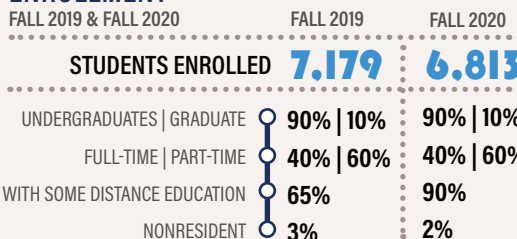
FALL 2019 & FALL 2020



COST & FINANCIAL AID 2019-20



ENROLLMENT

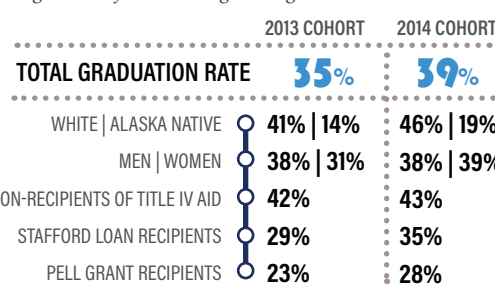


1ST-TO-2ND YEAR RETENTION RATES

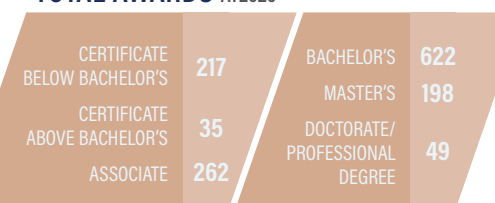


GRADUATION RATES 2013 & 2014 COHORTS

Within 150% of Normal Time, First-Time, Full-Time, Degree/Certificate-Seeking Undergraduates



TOTAL AWARDS AY2020



TOP PROGRAMS

ASSOCIATE AWARDED AY2020

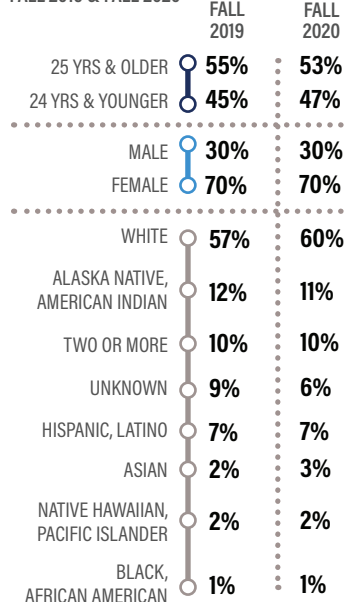
- Engineering — 90
- Business, Management, Marketing, & Related Services — 78
- Homeland Security, Law Enforcement, Firefighting & Related Protective Services — 61

UNIVERSITY OF ALASKA SOUTHEAST

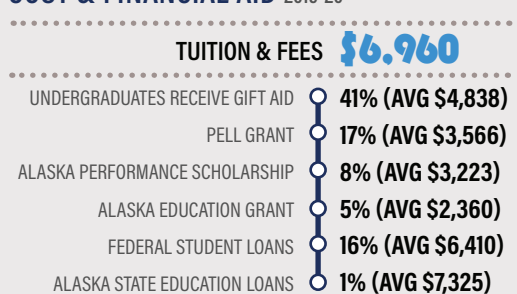
UAS.ALASKA.EDU
 CERTIFICATES, ASSOCIATE, BACHELOR'S
 JUNEAU · KETCHIKAN · SITKA

DEMOGRAPHIC BREAKDOWN

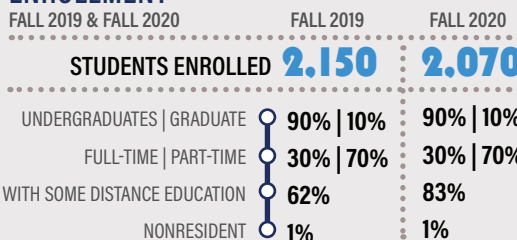
FALL 2019 & FALL 2020



COST & FINANCIAL AID 2019-20



ENROLLMENT

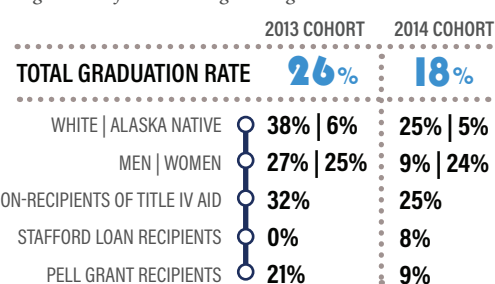


1ST-TO-2ND YEAR RETENTION RATES

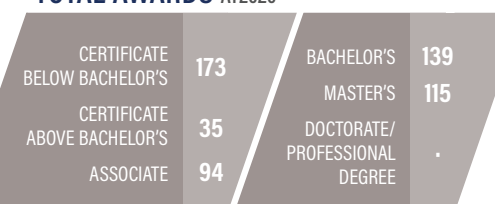


GRADUATION RATES 2013 & 2014 COHORTS

Within 150% of Normal Time, First-Time, Full-Time, Degree/Certificate-Seeking Undergraduates



TOTAL AWARDS AY2020

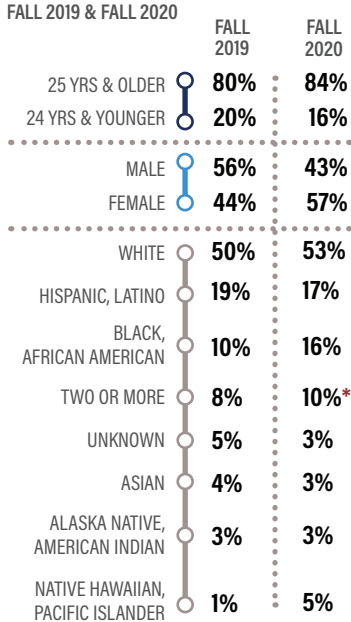


TOP PROGRAMS

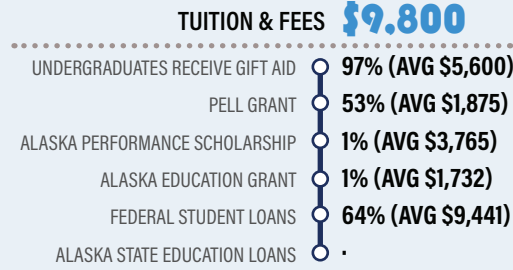
ASSOCIATE AWARDED AY2020

- (a) Business, Management, Marketing, & Related Services — 35
(b) Education — 35
- Social Sciences — 18
- Biological & Biomedical Sciences — 17

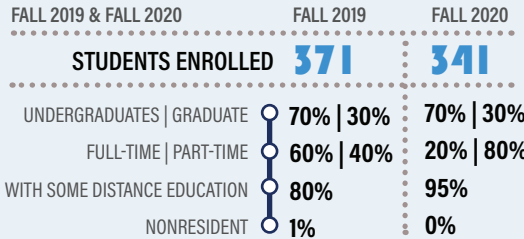
DEMOGRAPHIC BREAKDOWN



COST & FINANCIAL AID 2019-20



ENROLLMENT

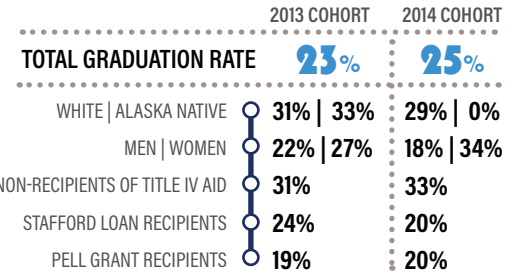


1ST-TO-2ND YEAR RETENTION RATES



GRADUATION RATES 2013 & 2014 COHORTS

Within 150% of Normal Time, First-Time, Full-Time, Degree/Certificate-Seeking Undergraduates



TOTAL AWARDS AY2020



TOP PROGRAMS

BACHELOR'S AWARDED AY2020

Applied Science — 2 Christian Ministry —

* NOTE: Fall 2020 race/ethnicity breakdown is greater than 100% due to "Two or More Races" being double-counted with other ethnicities.

Exhibit 67



POSTSECONDARY INSTITUTION PANDEMIC RESPONSE, 2020-21 TERM

ACPE's follow-up 2021 survey to Alaska postsecondary institutions regarding institutional response to the pandemic showed the majority made changes to recruitment, admissions, residency, and education delivery to accommodate faculty and student needs.

Surveyed Alaska institutions implementing admissions & residency changes:



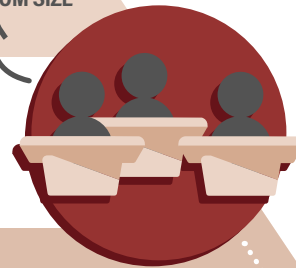
75%
Implemented Virtual Recruitment

73%
Changed Admissions Processes

80%
Changed Residency Accommodations

Surveyed Alaska institutions implementing instructional changes:

8%
AVERAGE REDUCTION IN CLASSROOM SIZE



50%
Hybrid Offered

42%
Offer Distance Education

33%
Virtual Offered

33%
In-Person Only

ALASKA WORKFORCE TRAINING CENTERS (WTC)

SEE ADDITIONAL LIST OF WTC'S ON PG. 42



ALASKA DRIVING ACADEMY: TRUCK DRIVING DIVISION LLC

ALASKADRIVINGACADEMY.COM
 SOLDOTNA

Grad. Rate

99%
2021

Top Programs

- 1** Entry Level Driver Training (CDL) program – 76
- 2** Basic Civil Construction Course (Heavy Equipment) – 30

Tuition & Fees

ELDT
\$5,895
BSS
\$7,000

Financial Aid

Registered with the Job Center & work with various corporations, tribal entities & employers.



KENAI PENINSULA DRIVING INSTRUCTION

KENAI DRIVING.COM
 KENAI

Grad. Rate

99%
Fall 2020 to Spring 2021

Top Programs

- 1** Commercial Truck Driving, Beginners – 41
- 2** Commercial Truck Driving (CDL), 40 Hour – 81
- 3** Commercial Truck Driving (CDL), 24 Hour – 12

Tuition & Fees

Beginners
\$6,000
40 Hour
\$5,000
24 Hour
\$3,000

Financial Aid

Alaska Performance Scholarship, DOL STEP Grant, DOL CSTS Funding Programs (ETPL), Alaska Native Grants & Scholarships



OUTER COAST

OUTERCOAST.ORG SITKA

Grad. Rate

95%
Fall 2020 to Spring 2021

Top Programs

NA

Tuition & Fees

Outer Coast programs have no fixed cost of attendance. Outer Coast works with individual students & their families to establish a cost based on their household's financial means.

Financial Aid

Outer Coast will meet 100% of demonstrated financial need for all students, including travel.



TREND SETTERS SCHOOL OF BEAUTY

TRENDSETTERS.AK.COM
 ANCHORAGE

Grad. Rate

98%
Fall 2020 to Spring 2021

Tuition & Fees

Hairdresser
\$8,500
BSS
\$7,000

Financial Aid

MYCAA, student loan, ACPE, private scholarships

Top Programs

- 1** Hairdressing –

EXHIBIT 68, CONTINUED

OTHER ALASKA WORKFORCE TRAINING CENTERS

A HEAD OF TIME DESIGN ACADEMY

facebook.com/topofthelinebeautysupply
Anchorage

ACADEMY OF HAIR DESIGN

academyofhair.com
Anchorage

ALASKA INSTITUTE OF ORIENTAL MEDICINE, ACUPUNCTURE, & MASSAGE THERAPY

akinstitute.com
Anchorage

AMUNDSEN EDUCATIONAL CENTER

aecak.org
Soldotna

CENTER FOR EMPLOYMENT EDUCATION

cee-ak.com
Anchorage

GENERATIONS SOUTHEAST COMMUNITY LEARNING CENTER

generations-southeast.org
Juneau

GLENDA'S TRAINING CENTER

thebeautyschoolatglendas.com
Wasilla

HAIR SCIENCE

hairsciencethe-school.com
Anchorage

METROASIS

metroasis.com
Anchorage

NORTHERN INDUSTRIAL TRAINING

nitalaska.com
Palmer

SHEAR FIRE ACADEMY OF HAIR DESIGN

shearfiredesign.net
Palmer

THE ESTHETICS DISTRICT

theesthetics-district.com
Anchorage

YUUT ELITNAURVIAT: THE PEOPLE'S LEARNING CENTER

yuut.org
Bethel

SECTION 6 | PG. 42-43

DATA NOTES



SECTION 1 · ACPE & THE COMMISSION, ALASKACAN & IMPACT OF COVID-19

Commission members were updated August 2022. Current commission members can be found at <https://acpe.alaska.gov/About-Us>. **Impact of COVID-19:** The high school senior survey was administered by ACPE to evaluate the role of COVID-19 on postsecondary education plans and decisions. The survey took place throughout the 2022 academic year, with the initial survey sent October 2021 and follow-ups in March and May 2022. Contact ACPE for more information and additional survey results.

SECTION 2 · HIGHER EDUCATION: ALASKA CONTEXT

PG. 12: Alaska PEAKS assessment for high school class of 2024 (9th graders tested AY2021) are from the Alaska Department of Education and Early Development (DEED) (education.alaska.gov/data-center) (*Exhibit 10*). Due to the COVID-19 pandemic, there were no PEAKS assessments for the high school class of 2023. Summary of the class of 2021 APS is from ACPE's 2020 & 2021 APS Outcomes reports (acpe.alaska.gov/Reports) (*Exhibit 11*). **PG. 13:** ACT scores are published in "Average ACT Scores by State: Graduating Class of 2021" (act.org). Gender breakdown for ACT testing is from ACT's Tableau Data Visualization Tool (<https://www.act.org/content/act/en/research/services-and-resources/data-and-visualization/grad-class-database-2021.html#data-vis>) (*Exhibit 12*). SAT scores are from CollegeBoard's 2021 SAT Suite of Assessments Annual Reports (Total Group Report & individual State reports) (reports.collegeboard.org/) (*Exhibit 13*). The 2018-19 national ACGR are from the National Center for Education Statistics (NCES) (nces.ed.gov). Alaska public high school graduation rates for class of 2020 & 2021 are from DEED (*Exhibit 14*). **PG. 14:** Postsecondary enrollment after high school for Alaska's class of 2020 and progress of Alaska's class of 2014 are from the National Student Clearinghouse's (NSC) StudentTracker service (*Exhibit 15-17*). **PG. 15:** Distance education highlights are from the Western Interstate Commission for Higher Education (WICHE) Student Access Programs: By the Numbers (wiche.edu) (*Exhibit 18-20*) and the National Council State Authorization Reciprocity Agreements (NC-SARA) Tableau dashboard (nc-sara.org/data-dashboards) (*Exhibit 21*). **PG. 16:** Postsecondary undergraduate and graduate 12-month enrollment trends (2011-2020) were from the National Center for Education Statistic's Integrated Postsecondary Education Data System (IPEDS) (nces.ed.gov/ipeds, provisional & final release data) (*Exhibit 22-24*). Data pertaining to the pandemic's impact on first-time freshman postsecondary enrollments in Alaska are from NSC (*Exhibit 25*). **PG. 17:** Fall enrollment totals and trends by institution were from IPEDS (provisional & final release data) (*Exhibit 26*). **PG. 18:** Number of completers and graduation rates (within 150% of normal time, first-time, full-time freshman) for AY2016-2020 are from IPEDS: Graduation Rates & Completions (provisional & final release data) (*Exhibit 27-28*). **PG. 19:** Award breakdowns and top disciplines among Bachelor's degrees (first major, grand total) for AY2020 are from IPEDS:

Completions (provisional & final release data) (*Exhibit 29-32*). **PG. 20:** Postsecondary education attainment rates are from the U.S. Census Bureau American Community Survey (ACS), Table S1501. It should be noted that 2018 rates are from the 2019 ACS 1-Year estimates, while 2019 rates are from the 2020 ACS 5-Year estimates (data.census.gov) (*Exhibit 33*). The Census Bureau did not release its standard 2020 ACS 1-year estimates due to the pandemic's impact on data collection. Certificate rates are from the Alaska Postsecondary Access and Completion Network (65by2025.org) (*Exhibit 33*). **PG. 21:** Projected jobs and wages by education attainment (2018-2028) are from the Department of Labor and Workforce Development, published in Alaska Economic Trends 2020 (labor.alaska.gov) (*Exhibit 34*). Median earnings of students 10 years after first enrollment who received federal financial aid are from the U.S. Department of Education College Scorecard (data accessed May 2022 at collegescorecard.ed.gov/data) (*Exhibit 35*). Data pertaining to the pandemic's impact on the Alaska economy are from the U.S. Census Bureau of Labor Statistics (BLS) (bls.gov/data) (*Exhibit 36*).

SECTION 3 · HIGHER EDUCATION: NATIONAL CONTEXT

PG. 22-23: Alaska's demographic breakdown of high school graduate enrollments by gender, enrollment intensity, and race/ethnicity (class of 2019 & 2020) were from the NSC StudentTracker service (*Exhibit 37-39*). The comparative National demographic breakdowns were from IPEDS, fall 2019 and fall 2020 enrollments (*Exhibit 37-39*). National Context Data Table A (*Exhibit 40*) includes data by state for education attainments (2020) and graduation rates (cohort 2013 and 2014). **PG. 24:** Education attainment data for Alaska (2020 residents 25 years and older) came from the Census Bureau's 2020 ACS 1-Year experimental estimates, Table ID: XK201501 (*Exhibit 41*). According to the Census Bureau, "The 2020 ACS 1-year experimental tables use an experimental estimation methodology and should not be compared with other ACS data." (For more details visit American Community Survey Experimental Data (census.gov)). Postsecondary graduation rates by state are from the IPEDS Trend Generator, Graduation and Retention Rates: "What is the graduation rate within 150% of normal time at 4-year/2-year postsecondary institutions?" (nces.ed.gov/ipeds/TrendGenerator, provisional 2020 data). Data represents graduation rates at 4-year institutions six years after first enrollment for first-time, full-time Bachelor's degree-seeking undergraduates (cohort 2013 and 2014) (*Exhibit 42*), and 2-year institutions three years after first enrollment (cohort 2016 and 2017) (*Exhibit 43*). **PG. 25:** National Context Data Table B (*Exhibit 44*) includes data by state for total full-time equivalent (FTE) enrollment for FY20 and FY21; average tuition and fees (2019-20) for public 2-year and 4-year schools; and student costs for FY20 and FY21. **PG. 26:** Data on students' share of cost (net tuition as a proportion of total educational revenues) (*Exhibit 45*), state appropriations to postsecondary institutions (*Exhibit 46*), and change in FTE enrollments (*Exhibit 47*) are from the State Higher Education Executive Officers Association (SHEEO), published in the State Higher Education Finance (SHEF) 2020 and 2021 reports (sheeo.org). Low-income college participation by state (2018 & 2020) are from the Pell Institute for the Study of Opportunity in Higher Education, Indicators of Higher Education Equity in the

United States Table 1i(i) (*Exhibit 48*). **PG. 27:** Poverty rates by educational attainment are from the 2019 American Community Survey 1-Year Estimates, U.S. Census Bureau Table S1701 (data.census.gov) (*Exhibit 49*). Due to COVID reporting impacts, 2020 data were not available. Average tuition and fees by state are from the NCES Digest of Education Statistics table 330.20 (average tuition and fees are for full-time students at public in-state 4-year institutions, 2019-2020) (*Exhibit 50*). Student debt data is from The Institute for College Access and Success (TICAS), "Student Debt and the Class of 2020: 16th Annual Report" (classof2020.pdf (ticas.org)) (*Exhibit 51*). Data was licensed from 2020 Peterson's LLC for the college graduating class of 2019 bachelor's students (ticas.org). Student debt data were reported by colleges in response to a voluntary survey (Peterson's Undergraduate Financial Aid Survey). They are not audited, and colleges have an incentive to under-report student debt or may not be fully aware of all the private loans held by students and therefore under-report student debt in response to the survey. Income inequality by state (reported as the Gini coefficient) was from American Community Survey Briefs, Household Income: 2019, Table 1 (census.gov/content/dam/Census/library/publications/2020/acs/acsbr20-03.pdf) (*Exhibit 52*). The Gini coefficient is a statistical measure of the amount of variation in incomes in an economy, where a coefficient of 0 represents perfect income equality and a coefficient of 1 perfect inequality. Median household income from the past 12 months, reported in 2020 inflation-adjusted dollars, was from the U.S. Census Bureau's 2020 ACS 1-Year experimental estimates, Table ID: XK201902 (*Exhibit 53*). Cost of living data is based on 2020 regional price parties (RPP) and is from the U.S. Bureau of Economic Analysis within the U.S. Department of Commerce (bea.gov) (*Exhibit 54*).

SECTION 4 · FINANCIAL AID

PG. 29: Internal FY21 ACPE data were used to report Alaska Performance Scholarship (APS), Alaska Education Grant (AEG), and Alaska State Education Loan information. Federal financial aid totals are from the U.S. Department of Education Federal Student Aid Office, Title IV Program Volume Reports, 2020-2021 New Disbursements by Location, Alaska (studentaid.gov). No FY21 data was available for UA Scholars (*Exhibit 55*). Data pertaining to the Cares Act Funds are from the U.S. Department of Education, Education Relief Fund (*Exhibit 56*). **PG. 30-33:** Data on student outcomes were from ACPE's APS 2020 and 2021 Outcomes Reports (*Exhibit 57-62*) and internal AEG disbursement data (*Exhibit 63-65*).

SECTION 5 · ALASKA POSTSECONDARY INSTITUTIONS

PG. 34-40: Postsecondary institutional profile data for Alaska Bible College, Alaska Career College, Alaska Christian College, Alaska Pacific University, AVTEC, Ilisagvik College, and the University of Alaska (UAA, UAF, and UAS) were from IPEDS (2020-21 provisional release data, 2018-2019 final release data). Reported demographic breakdowns used 2019 and 2020 'Fall Enrollments' for age (undergraduates), gender (all students), and race/ethnicity (all students). Reported cost & financial aid used 'Student Charges' (2020-21 published in-district tuition and fees, 2019-20 financial aid awarded to undergraduate students). Minor discrepancies were noted between the number of undergraduates IPEDS reported receiving

financial aid and the number of AEG recipients ACPE reported, likely due to IPEDS being provisionally released data, not final release. Reported enrollment used 2019 and 2020 'Fall Enrollments' for breakdown of undergraduates/graduates, part-time/full-time (all students), with some distance education (undergraduates), and non-residents (all students) (2020 – provisional release, 2019 – final release). Reported 1st-to-2nd year retention rates and graduation rates used cohorts 2013 and 2014 'Graduation Rates - Frequently Derived Variables' (graduation rates within 150% of normal time, first-time, full-time, degree/certificate-seeking undergraduates). Reported awards (grant totals, first major) and top programs used AY2020 'Completions' Profile data for Central Texas College, Charter College, and Wayland Baptist University were primarily supplied from survey information reported to ACPE of students enrolled in Alaska: fall 2019 and 2020 enrollment/demographic breakdown, AY20 cost & financial aid, and AY20 awards/top programs. Survey responses were combined with IPEDS graduation rate data for cohorts 2013 and 2014. APS, AEG, and state loan financial aid amounts were from internal ACPE data (2019-20). Data fields not reported in aggregate in IPEDS institutional profiles for that institution or supplied directly by the institution are denoted "•" (*Exhibit 66*). For more IPEDS data, visit nces.ed.gov/ipeds/use-the-data. The ACPE 2022 Alaska Higher Education Almanac Institution survey supplied information pertaining to how Alaska postsecondary institutions responded to the pandemic (*Exhibit 67*). **PG. 41-42:** Workforce training program information was requested from each institution and were included to the extent each institution contributed to the Almanac (*Exhibit 68*).

TO LEAVE FEEDBACK

ABOUT THIS PUBLICATION FOR CONSIDERATION IN FUTURE EDITIONS, PLEASE VISIT:

surveymonkey.com/r/akalmanac

For questions about the data used in this report or for additional information about Alaska postsecondary education research, contact ACPE at (800)441-2962 or visit ACPE.ALASKA.GOV/REPORTS

2022

ALASKA HIGHER EDUCATION ALMANAC



IMPACT OF COVID-19: A SUMMARY

ACPE provides its programs and services to all persons without regard to race, color, religion, national origin, gender, age, political affiliation, or disability. Auxiliary aids and services available upon request to individuals with disabilities.

ALASKA COMMISSION ON POSTSECONDARY EDUCATION

PO Box 110505, Juneau, Alaska 99811-0505
800-441-2962 | In Juneau: 907-465-2962
TTY: Dial 711 or 800-770-8973

1 PLACEMENT TEST WAIVERS

Nationwide performance evaluations & placement test waivers were approved for the graduating class of 2020 & 2021, effectively making GPA the determinant of award level for the Alaska Performance Scholarship.



2 FIRST-TIME FRESHMAN POSTSECONDARY ENROLLMENTS

2020: unprecedented decrease in first-time freshman postsecondary enrollments in Alaska & nationwide. **-10%**



2021: greater recovery of first-time freshman in Alaska than national averages. However, first-time freshman enrollments still remain below 2019 levels.

3 ECONOMIC RECOVERY

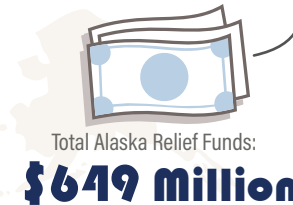


APRIL 2020 TO SEPTEMBER 2020: Alaska's peak unemployment (12%) was lower than the national peak (15%).

JOB LOSS: Over 20,000 jobs were temporarily lost in Alaska during the pandemic.

PRELIMINARY 2022: Alaska & national unemployment rates have recovered to rates similar to 2019.

4 CARES ACT FUNDS



HEERF TOTAL 13% \$83 MILLION

HEERF (Higher Education Emergency Relief Fund)

STUDENT PORTION OF HEERF 31% \$26 MILLION

Emergency financial aid grants for Alaska students disrupted by COVID-19

5 POSTSECONDARY INSTITUTION PANDEMIC RESPONSE, 2020-21 TERM

ACPE's 2022 ACPE Higher Education Survey found that virtual alterations to recruitment, admissions, and education in Alaska's postsecondary institutions remained crucial offerings through the pandemic for both faculty and students.



OVER 70% IMPLEMENTED ADMISSIONS & RESIDENCY CHANGES



OVER 45% IMPLEMENTED INSTRUCTIONAL CHANGES